



PONT INTERNATIONAL  
**GORDIE**  
**HOWE**  
INTERNATIONAL BRIDGE



# **PUBLIC INFORMATION MEETING #24**

June 20, 2023

# | NEW CHIEF EXECUTIVE OFFICER

## WINDSOR-DETROIT BRIDGE AUTHORITY

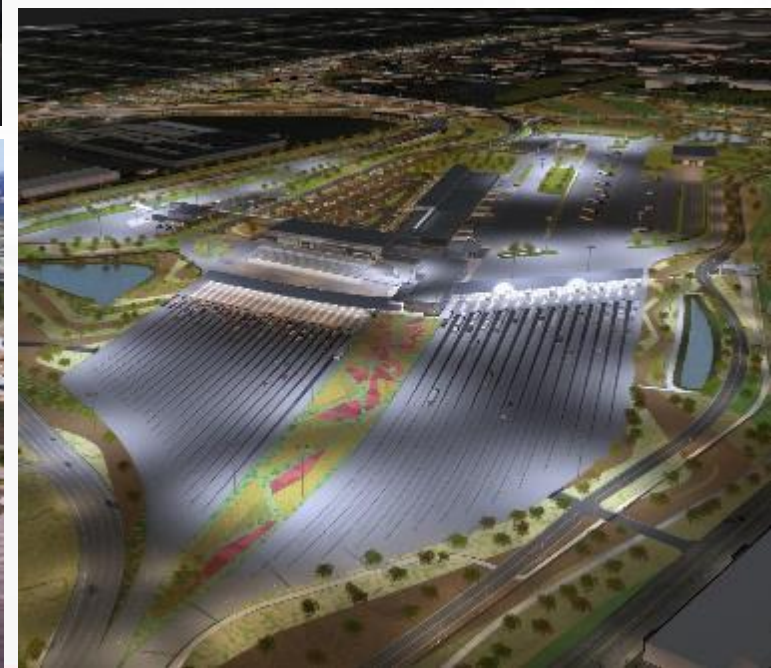
Charl van Niekerk



Infrastructure  
Canada

Canada

# PROJECT COMPONENTS



# CONSTRUCTION UPDATE: BRIDGE SITES



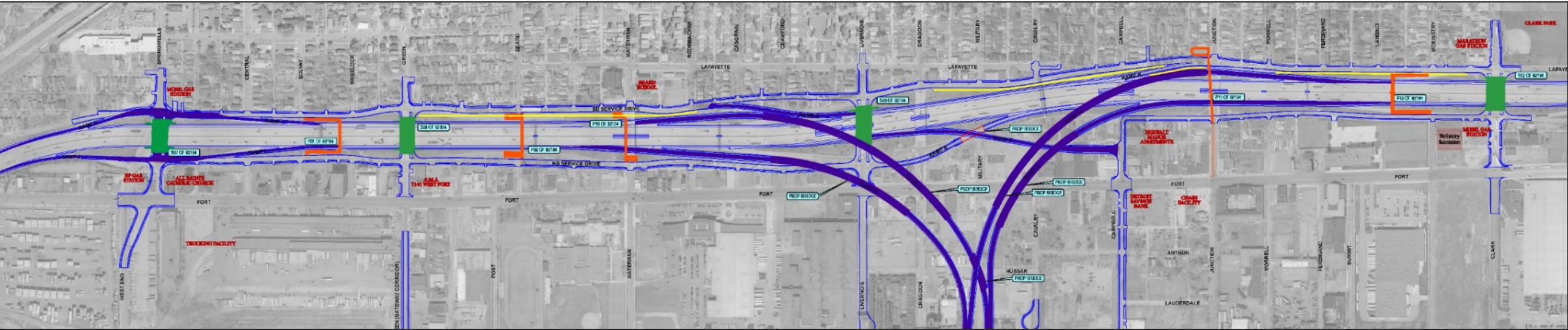
# CONSTRUCTION UPDATE: CANADIAN PORT OF ENTRY



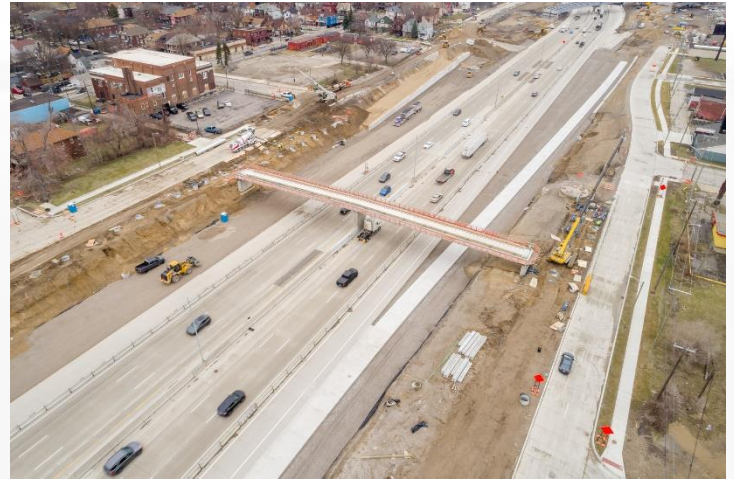
# CONSTRUCTION UPDATE: US PORT OF ENTRY



# CONSTRUCTION UPDATE: MICHIGAN INTERCHANGE (I-75)



**ROAD BRIDGES**   **PEDESTRIAN BRIDGES**   **ACCESS RAMPS**



# SAFETY DURING CONSTRUCTION

- **Construction zones are dangerous** places whether workers are present or not.
- Any entry into the construction site is considered **trespassing**.
- **Drones** put our **staff**, especially those working at heights, in **danger**.
- For **your safety** and the safety of **our team**, please **do not enter the project construction zones** unless authorized to do so.





# BRIDGE LIGHTING

- Energy efficient LED lights
- Control system with dimming and sequencing options
- Lighting optics with spill minimization features



**VISUAL ART PROGRAM  
PUBLIC ART COMMISSION:**  
Dramatic bridge lighting will be incorporated as an artistic feature.

## BRIDGE TOWERS

- Illuminated in all directions

## STAY CABLES

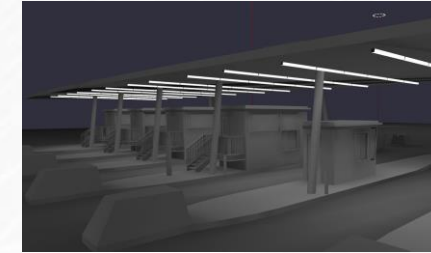
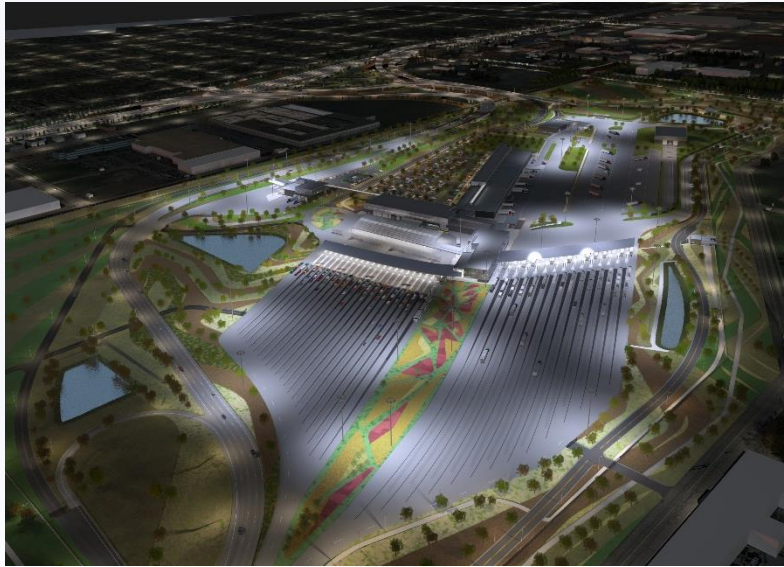
- Individually illuminated from base upward

## BRIDGE DECK

- Lined with lights defining the decks' edge



# PORTS OF ENTRY LIGHTING



- Energy efficient LED lights
- Use of optics and downlighting to reduce light spill



## ARCHITECTURAL LIGHTING

- provide visual support for operational tasks

## FUNCTIONAL LIGHTING

- enhance visibility and improve safety of roadways and paths

## AESTHETIC LIGHTING

- accent building features, flagpoles and landscaped areas.

# SANDWICH STREET RECONSTRUCTION



- Three kilometres of Sandwich Street will be reconstructed, from south of the Rosedale Avenue roundabout, past Ojibway Parkway to McKee Avenue.
- Sandwich Street work is anticipated to begin in summer 2023.
- Construction timing and schedules will be shared once finalized.

# PUBLIC ART COMMISSION: INDIGENOUS SCULPTURE

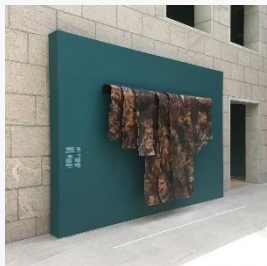


## MEET THE ARTIST: MICHAEL BELMORE

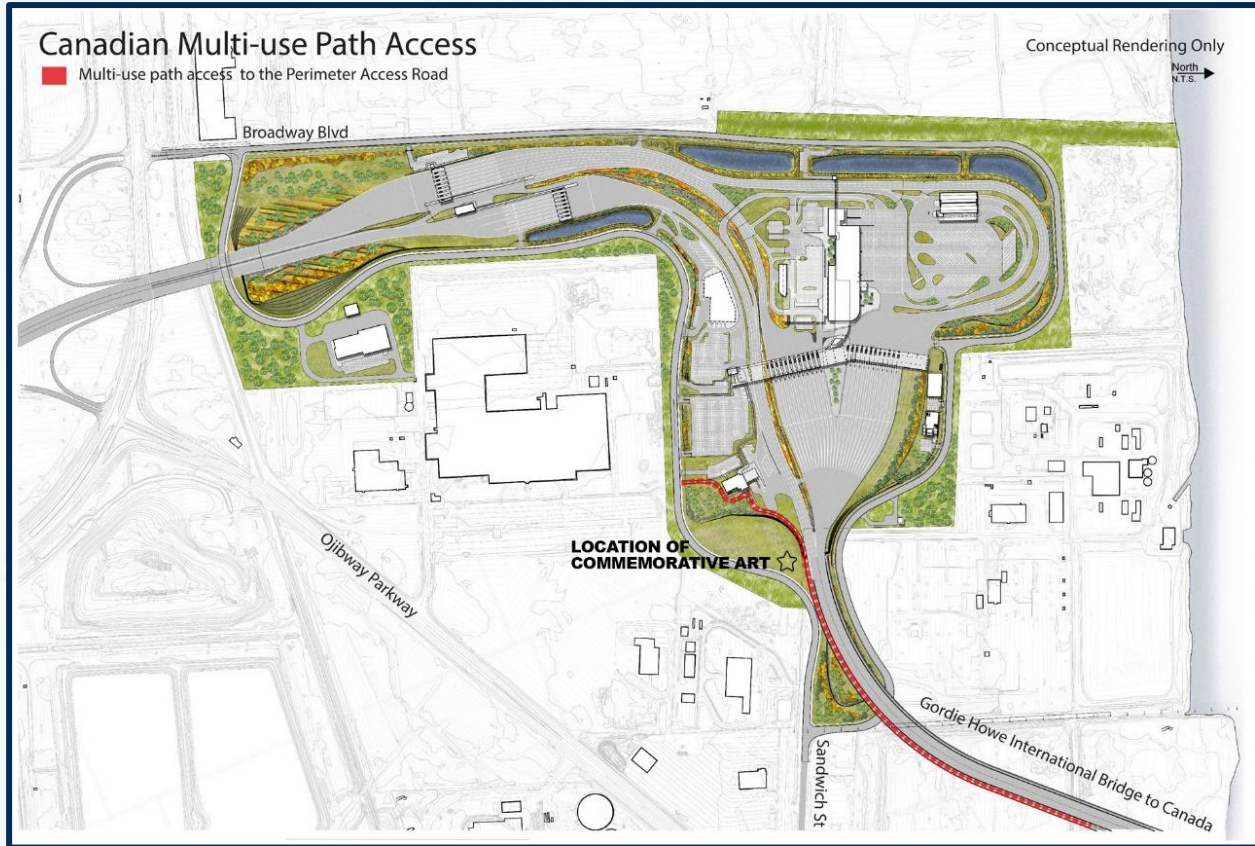
- Anishinaabe artist from northern Ontario, currently based in Newmarket, Ontario.
- Practicing for over 25 years
- Internationally recognized
- His work employs a variety of materials and processes that reflect the environment, land, water, and what it is to be Anishinaabe.

## ABOUT THE COMMISSION

- 2.7-metre/nine-foot sculpture
- Recognizes and celebrates Indigenous Peoples in Canada
- Located at the Canadian Port of Entry
- Informed through consultation with local First Nations
- Installation is anticipated in late 2023.



# COMMEMORATIVE ART: UNDERGROUND RAILROAD ART COMMISSION



## ARTIST SELECTION IS NOW UNDERWAY

- RFQ for professional Canadian artists of the Black, African and Caribbean diaspora living and working in Canada occurred in spring 2023.
- A juried artist selection process in accordance with Canadian Heritage guidelines.
- Artist selection anticipated for summer 2023.
- Mentorship opportunity included.

# COMMUNITY BENEFITS PLAN



**The Workforce Development and Participation Strategy** is geared toward engaging businesses and individuals and focuses on supporting workforce, training and pre-apprenticeship/apprenticeship opportunities.



**The Neighbourhood Infrastructure Strategy** focuses on collaborating with stakeholders and community members through consultation to develop a community investment strategy based on identified priorities.

*US Bridge Site*

# WORKFORCE DEVELOPMENT AND PARTICIPATION STRATEGY

Cumulative Totals from September 2018 – March 2023

**9230+** individuals oriented to the project in Canada and the US

**42%** are local



**595+**

apprentices/pre-apprentices assigned to the project



**310+**

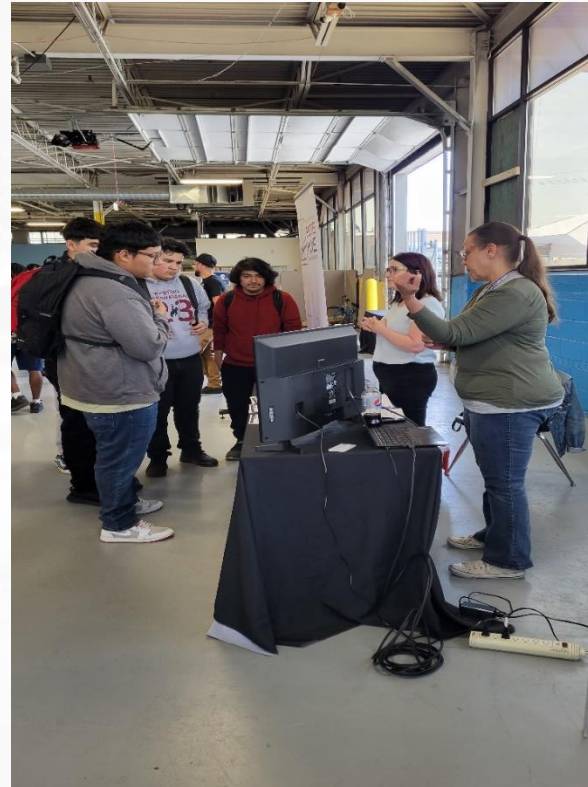
co-operative learning experiences have been provided on the project



**260+**

local businesses engaged on the project

# WORKFORCE DEVELOPMENT AND PARTICIPATION STRATEGY





# NEIGHBOURHOOD INFRASTRUCTURE STRATEGY



# NEIGHBOURHOOD INFRASTRUCTURE STRATEGY: 2023 PROGRAMMING INVESTMENTS SURVEY



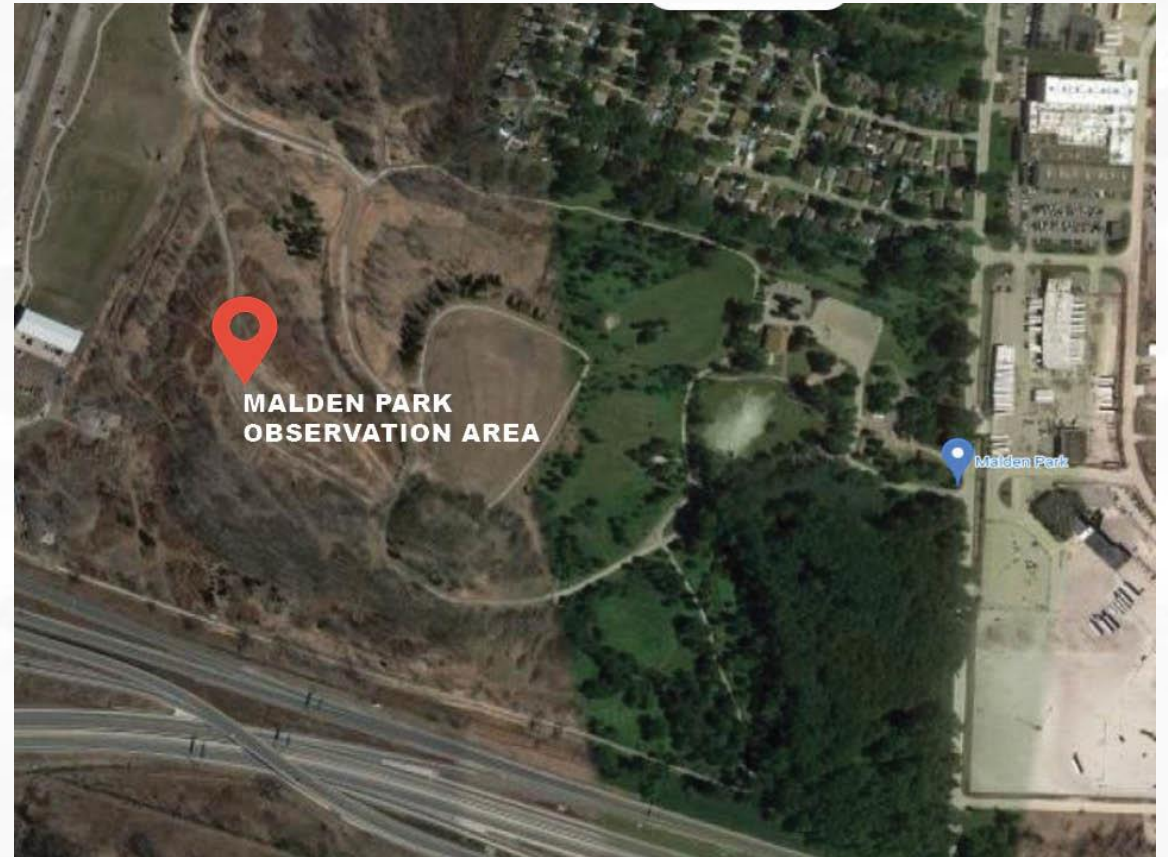
**HAVE YOUR SAY ON COMMUNITY INVESTMENT PRIORITIES**

**TAKE THE SURVEY:**

- online at [GordieHoweInternationalBridge.com](https://GordieHoweInternationalBridge.com)
- submit a paper survey or provide feedback directly to a staff member here today.
- **Survey closes July 12, 2023**

# MALDEN PARK OBSERVATION AREA

- The Malden Park observation area will provide an attractive, safe location and a high elevation for residents, students and tourists to observe the construction of the Gordie Howe International Bridge.
- The project team is currently reviewing designs with the City of Windsor.
- Construction is anticipated to start in the coming months with the area opening to the public in 2023.



# LOCAL COMMUNITY GROUP RECRUITMENT



- The Local Community Group works with WDBA and BNA as informal partners on the implementation of the Community Benefits Plan
- **RECRUITING NEW MEMBERS:**
  - Two-year term
  - Participates in quarterly meetings
  - Provides input into the implementation of Community Benefits
- Stay tuned for more information and how to apply

# PREPARING FOR OPENING DAY: OPERATIONAL READINESS



# COMMUNITY OFFICE HOURS



Sandwich Community Office  
3201 Sandwich St.  
Windsor



Southwest Detroit Community Office  
7744 W Vernor Hwy.  
Detroit

As of July 11, 2023, community office hours will include:

Tuesdays 10:00 a.m. – 4:00 p.m.

Thursdays 10:00 a.m. – 4:00 p.m.

After-business appointments may be available upon request

# QUESTION AND COMPLAINT PROCESS

The project team is committed to ensuring that communication with the public is maintained during construction so concerns are addressed as quickly as possible. Adjacent residents and businesses will receive notifications of upcoming work, regular progress updates and project contact information.

Questions and complaints can be addressed to WDBA through the following:

- Public inquiry line: 1-844-322-1773
- [Info@wdbbridge.com](mailto:Info@wdbbridge.com)
- Booking an appointment at the Sandwich or Southwest Detroit Community Office

# LEARN MORE

 [gordiehoweinternationalbridge.com](http://gordiehoweinternationalbridge.com)

 1-844-322-1773

 @gordiehowebrg

 @gordiehowebridge

 Gordie Howe Bridge

 @gordiehowebrg

 WDBA-APWD

