



PONT INTERNATIONAL  
**Gordie Howe**  
INTERNATIONAL BRIDGE

Canada 

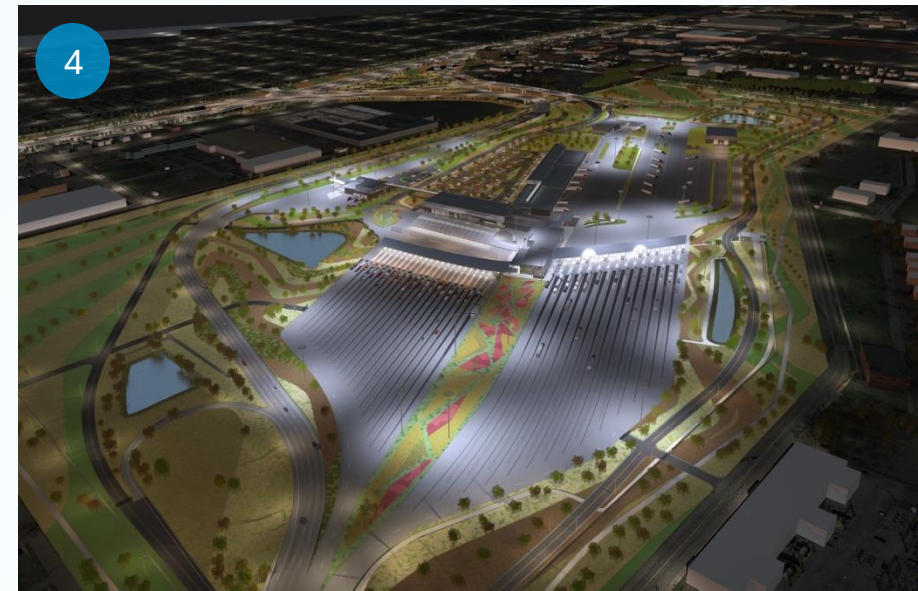
# Public Information Meeting

June 18, 2024



# Project Components

1. Gordie Howe International Bridge
2. Canada Port of Entry (POE)
3. Michigan Interchange
4. US Port of Entry (POE)



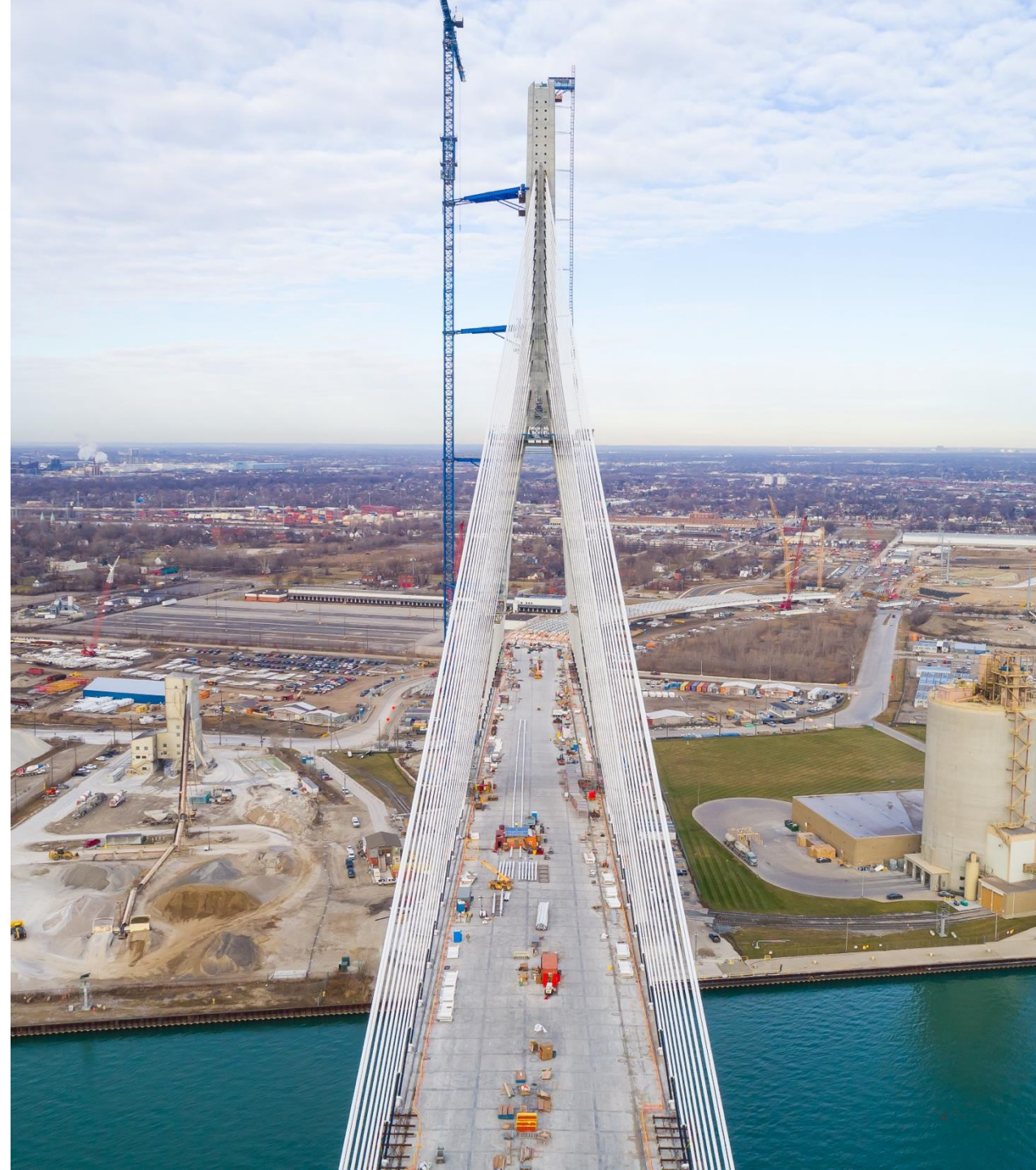
# Customer Centricity

The Gordie Howe International Bridge will provide a system of travel that is customer-centric, easy to use and that makes travelling from point A to point B as simple as possible.



Construction Update

# Bridge Sites



## Construction Update

# Ports of Entry



Construction Update

# Michigan Interchange (I-75)



Construction Update

# Sandwich Street Reconstruction

Three kilometres of Sandwich Street is being reconstructed from south of the Rosedale Avenue roundabout past Ojibway Parkway to McKee Road.

This includes:

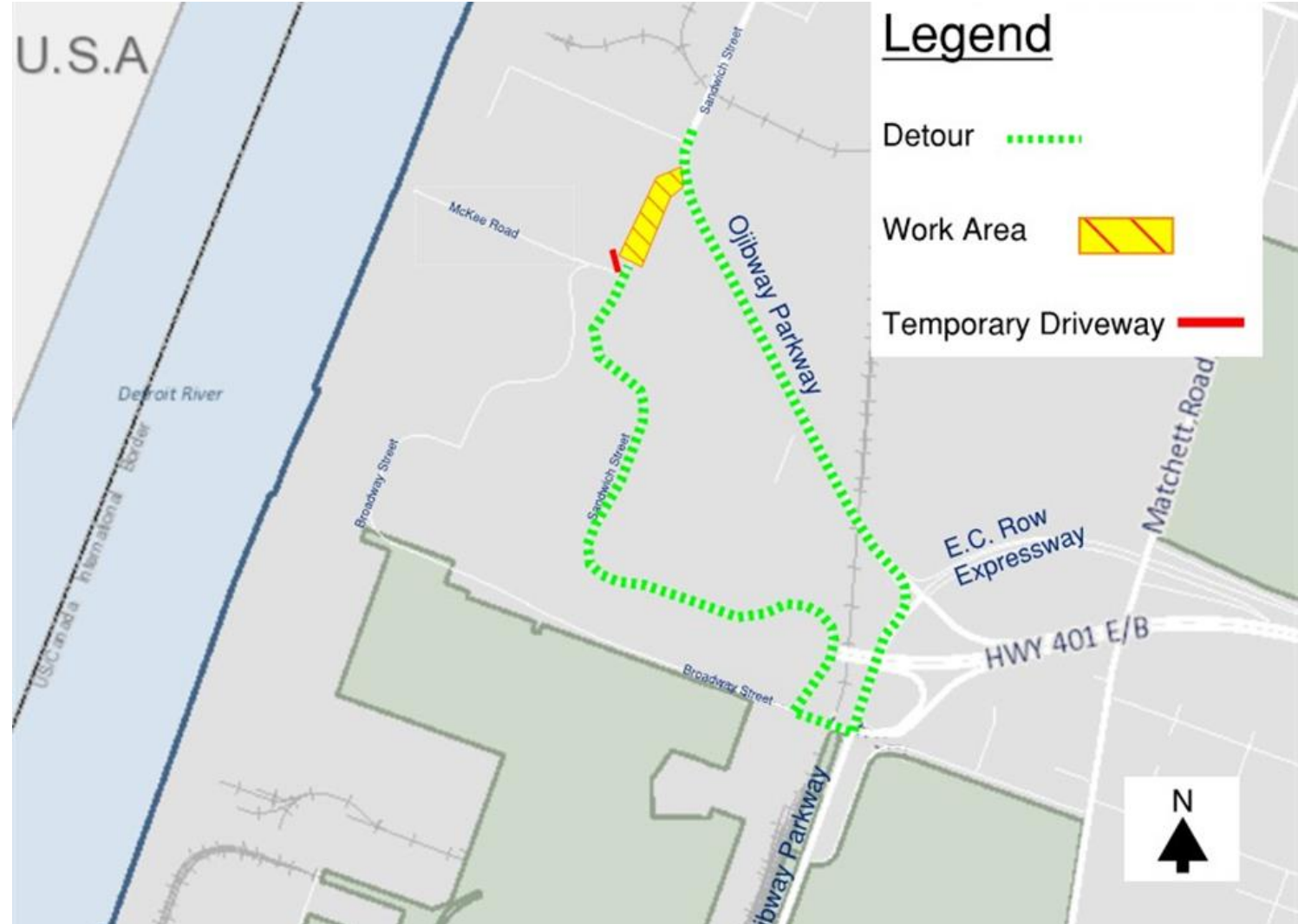
- New streets and sidewalks
- Cycling infrastructure
- New stormwater sewer
- Streetscape enhancements



# Phase One Work

**Phase One** work between McKee Road and the intersection of Ojibway Parkway and Sandwich Street is underway, requiring a full road closure.

**Traffic is being detoured to Broadway Street**

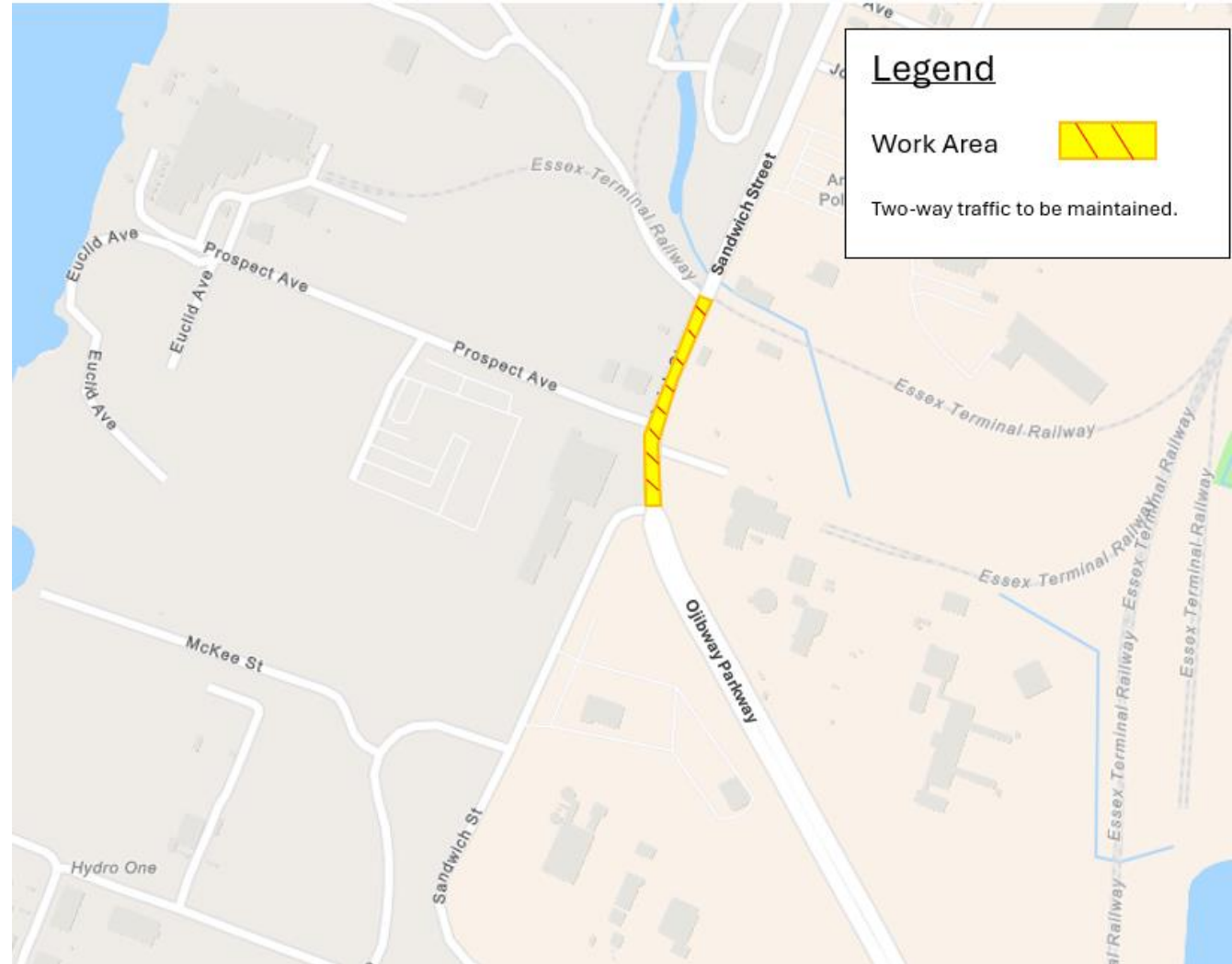




# Phase Two Work

The remaining segment of Phase Two between ETR and Ojibway Parkway is underway.

**Temporary lane closures are in place.** Two-way traffic and access to businesses is being maintained at all times.



# Phase Three Work and Watermain Installation

Rolling full closures are moving along the following segments of Sandwich Street:

- Chappell Avenue to Prince Road
- Prince Road to South Street
- South Street to Brock Street
- Brock Street to Chewett Street.

## Traffic is being detoured as follows:

- Truck traffic will use Russell Street for both directions of travel
- Regular traffic will use Peter Street for northbound travel and Russell Street for southbound travel.



# Construction Mitigations



- ✓ Vibration Monitoring Program
- ✓ Dust control
- ✓ Noise control

# Community Benefits Plan



**The Workforce Development  
and Participation Strategy**



**The Neighbourhood  
Infrastructure Strategy**

# Workforce Development and Participation Strategy

Cumulative Totals from September 2018 – March 2024



**12,060+**

individuals oriented to the project in Canada and the US

**42%** are local



**715+**

apprentices/pre-apprentices assigned to the project



**385+**

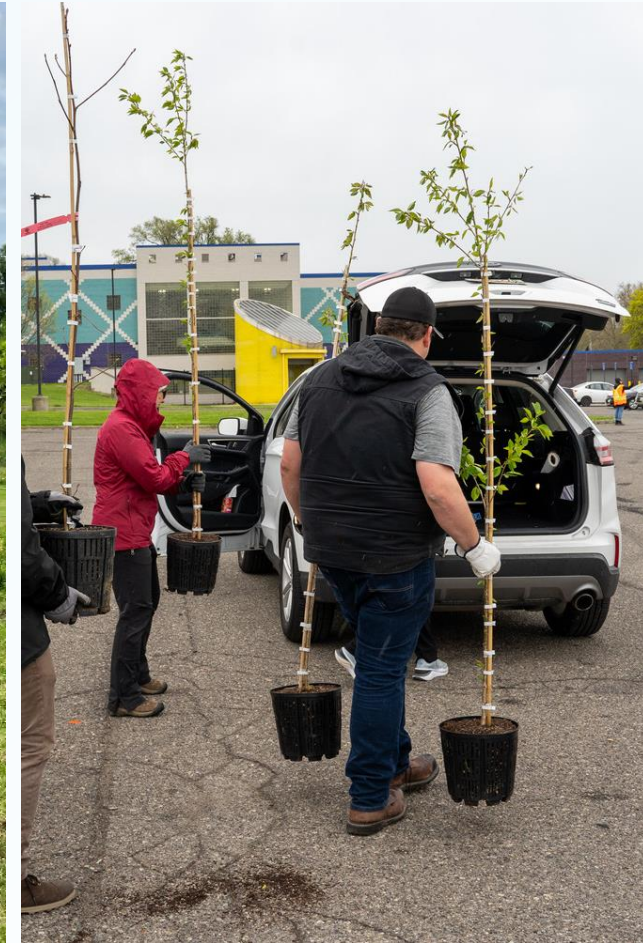
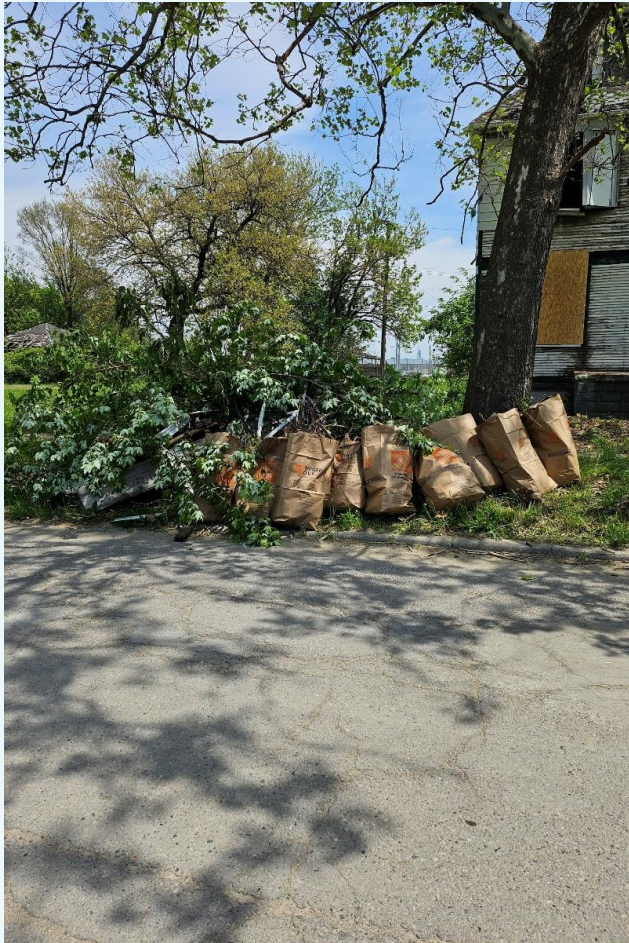
co-operative learning experiences have been provided on the project



**280+**

local businesses engaged on the project

# Neighbourhood Infrastructure Strategy



# 2024 Community Organization Investment Recipients

## Canadian Projects

- **Assumption University** - Father Joe Quinn Social Justice Series
- **Bike Windsor Essex** -Virtual Guided Bicycle Tours
- **CJAM Student Media** - 2024 Higher Grounds Music and Arts Festival
- **Sisters of the Holy Names of Jesus and Mary** - Programming – Family Activities and Events
- **Society of Saint Vincent de Paul – Helping Hands Friendship Centre** - Purchase of Fridge/Freezer and Programming Support
- **Windsor Essex Community Housing Corporation** - Kickstarting the West
- **Windsor Symphony Orchestra** - Education, Community Outreach and Concert Programming

## US Projects

- **Hispanic Police Officers' Association of Michigan-Detroit Chapter** - Grants for Youth Sports in Southwest Detroit
- **New City Kids** - Transformational Teen Life Internship Program
- **Southwest Detroit Business Association** - Discover Southwest Detroit
- **Southwest Economic Solutions** - Literacy Week at Campbell
- **Trinity-St. Mark's Pantry and Gardens** - Feed the Homeless
- **Unity in Our Community Timebank** - Let's Get Moving

# 2024 Call for Proposals



**\$5.5 million**  
in **funding** available



## Call for:

1. Programming Proposals for existing or new community programs
2. Regional Tourism and Economic Development Proposals



# Sandwich Street \$1 Million Enhancements

- **Landscaping enhancements:** soil cells to support tree canopy and low concrete planters
- **Redesigned gathering spaces:** benches and trees incorporated into key areas in the BIA.
- **Hardscaping features:** pre-cast pavers in a heritage finish and pattern, heritage tactile strips and tree grates.



Visual Art Program

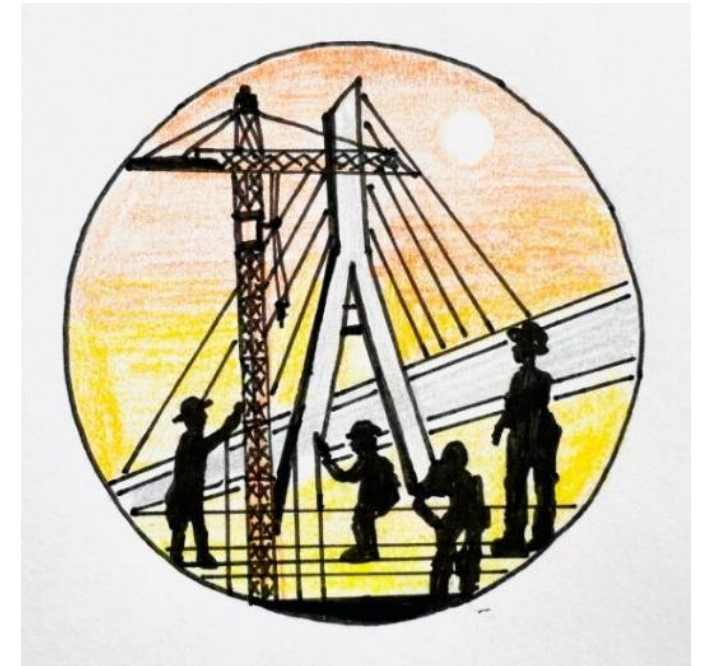
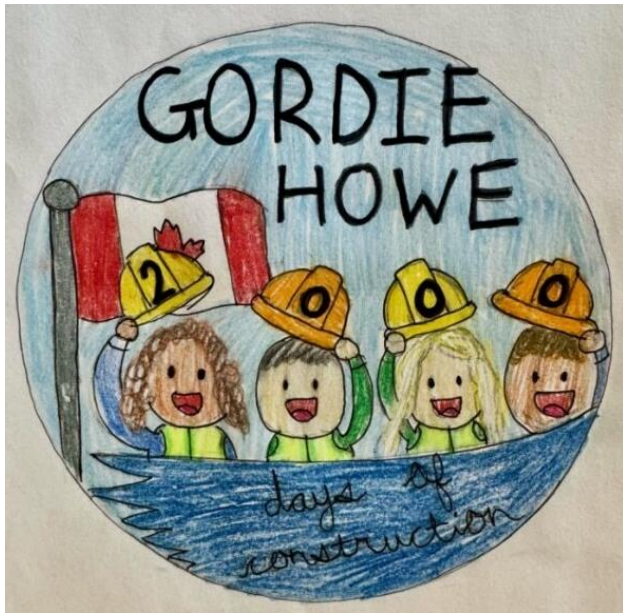
# Art Windsor Essex Exhibit: Jordan Sook



## The Closest I've Felt to God

June 20 – September 22, 2024

# Sticker Challenge Winners



Stay Connected

# Community Office Hours



## Sandwich Community Office

3201 Sandwich St.  
Windsor



## Southwest Detroit Community Office

7744 W Vernor Hwy.  
Detroit

### Community Office Hours:

Tuesdays 10:00 a.m. – 4:00 p.m.

Thursdays 10:00 a.m. – 4:00 p.m.

After-business appointments may be available upon request.



**Gordie Howe**  
INTERNATIONAL BRIDGE

# Stay connected



[gordiehoweinternationalbridge.com](https://gordiehoweinternationalbridge.com)



[info@wdbridge.com](mailto:info@wdbridge.com)



1-844-322-1773



Gordie Howe Bridge



@gordiehowebrg



@gordiehowebridge



@gordiehowebrg



WDBA-APWD

## Visit our offices

WDBA Office  
100 Ouellette Ave., Suite 400  
Windsor, ON

Southwest Detroit Community Office  
7744 W Vernor Hwy.  
Detroit, MI, 48209

Sandwich Community Office  
3201 Sandwich St.  
Windsor, ON  
N9C 1A8