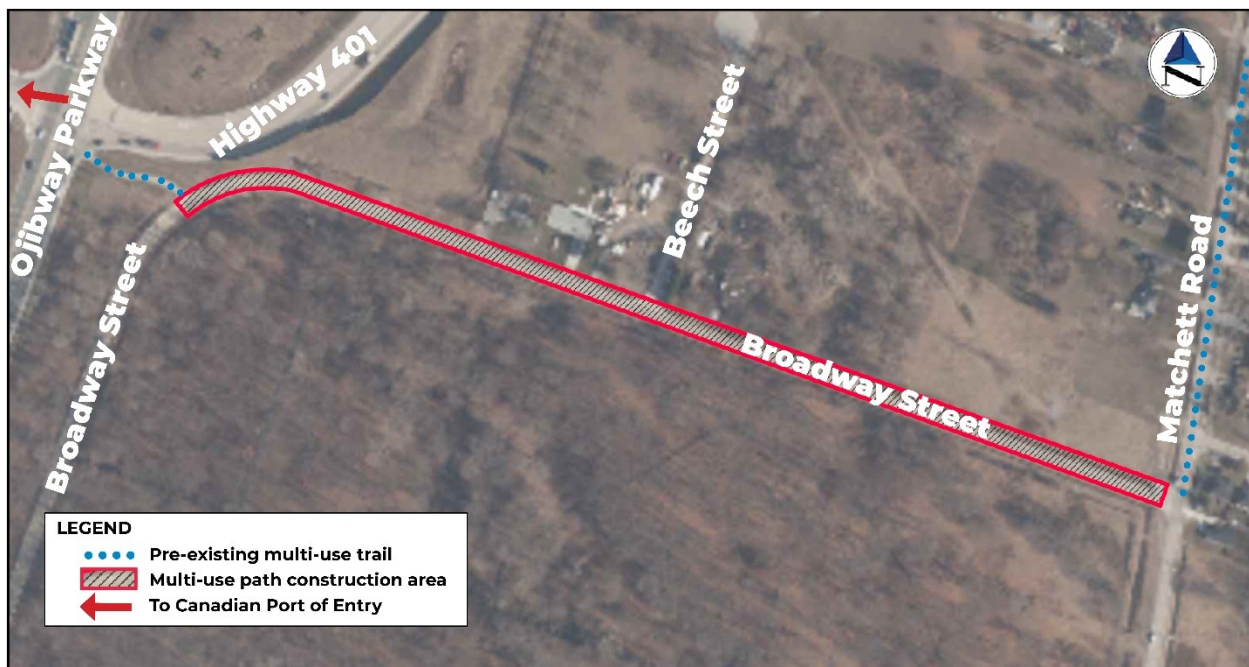


The Gordie Howe International Bridge project includes a dedicated multi-use path that will accommodate pedestrians and cyclists across the Windsor-Detroit border. Once complete, the multi-use path on the Gordie Howe International Bridge will provide safe connections to local trail networks in both Windsor and Detroit, including the Iron Belle Trail, Great Lakes Way and Joe Louis Greenway in Detroit, and a connection between from the Canadian Port of Entry to Malden Park, which links into the Rt. Hon. Herb Gray Parkway Trail, Chrysler Canada Greenway and the Great Lakes Waterfront Trail/Trans Canada Trail in Windsor.

## BROADWAY STREET MULTI-USE PATH

The new Broadway Street multi-use path will further enhance local and regional cycling networks by creating a new cycling and pedestrian connection from the corner of Broadway Street and Ojibway Parkway to the corner of Broadway Street and Matchett Road, where it will connect to the existing City of Windsor Matchett Road Multi-Use Trail. The Broadway Street path will be located on the north side of the road along the right of way, connecting into the Canadian Port of Entry via an existing Ministry of Transportation Ontario (MTO) trail. When complete it will provide a connection between Ojibway Parkway and Malden Park, where users can access the Rt. Hon. Herb Gray Parkway Trail.

The Broadway Street multi-use path is funded by the project Community Benefits Plan. Initiatives identified in the plan were based on community consultation undertaken between 2015 and 2018 where investment into active transportation infrastructure was strongly supported. In addition to the Broadway Street multi-use path, a trailhead at Malden Park will also be constructed providing multi-use path users with a safe parking option and meeting point near the Gordie Howe International Bridge.



## BROADWAY STREET MULTI-USE PATH AND MALDEN PARK TRAILHEAD DESIGN AND CONSTRUCTION

The Broadway Street multi-use path will be constructed to meet *Accessibility for Ontarians with Disabilities Act (AODA)* requirements and is anticipated to include:

- Construction of an approximately three-metre-wide asphalt multi-use path on the north side of Broadway Street, separated from vehicular traffic by a buffer including road markings and rumble strips, where space permits.
- Creation of a trailhead at Malden Park, adjacent to the Matchett Road parking lot, including benches, wayfinding signage and garbage cans.
- Infill of the existing ditch on the north side of Broadway Street and construction of a new swale adjacent to the new multi-use path to facilitate stormwater drainage, including installation of catch basins and culverts.
- Relocation of hydrants and other existing infrastructure, as needed.
- Installation of wayfinding signage and benches along the pathway.

Note: Enwin will install streetlights along existing pole infrastructure on Broadway Street to enhance safety for multi-use path users.

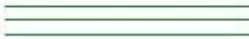





Construction on the Broadway Street multi-use path and Malden Park trailhead is anticipated to begin in fall 2024 and last approximately five weeks. More specific details will be shared closer to the start of construction.

Construction will take place between the hours of 7 a.m. and 7 p.m.

Once complete, the multi-use path will become part of the municipal trail network and will be owned and maintained by the City of Windsor.

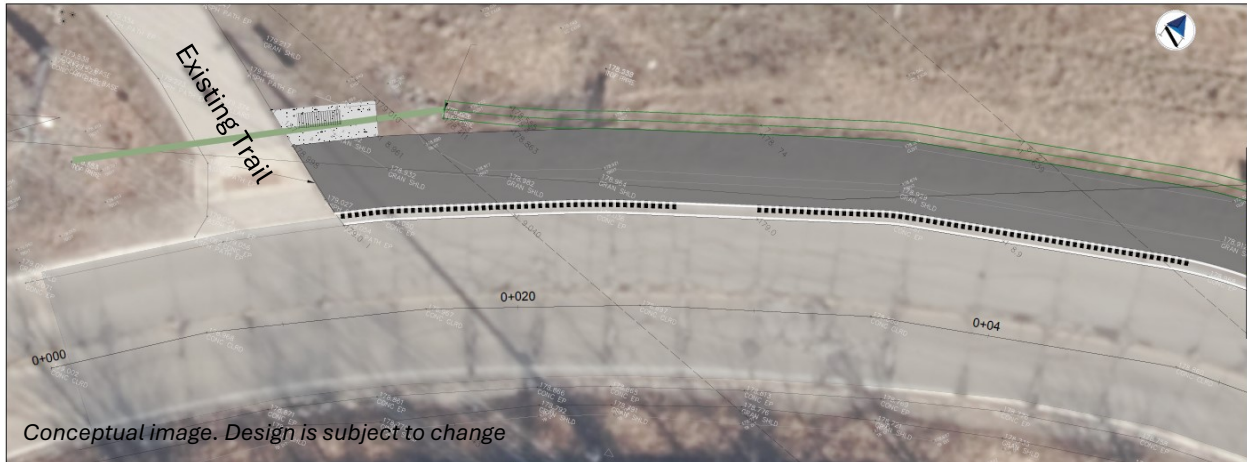
All designs and features are subject to change. Preliminary design details are below:

### Legend:

|   |                  |
|---|------------------|
|  | SWALE            |
|  | STORM SEWER      |
|  | REMOVALS         |
|  | STORM CULVERT    |
|  | RUMBLE STRIPS    |
|  | STORM CATCHBASIN |

### Broadway Street connection to Ojibway Parkway

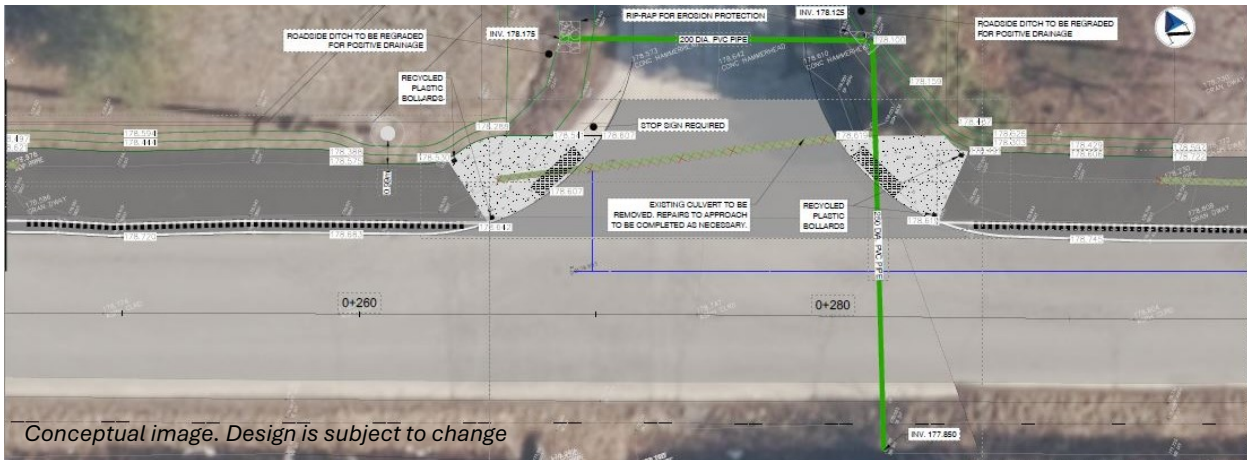
This section begins at the existing MTO trail connecting Ojibway Parkway to Broadway Street. It includes a smooth connection into the existing trail, removal and installation of new storm culverts, installation of storm catch basins, swales and rumble strips.



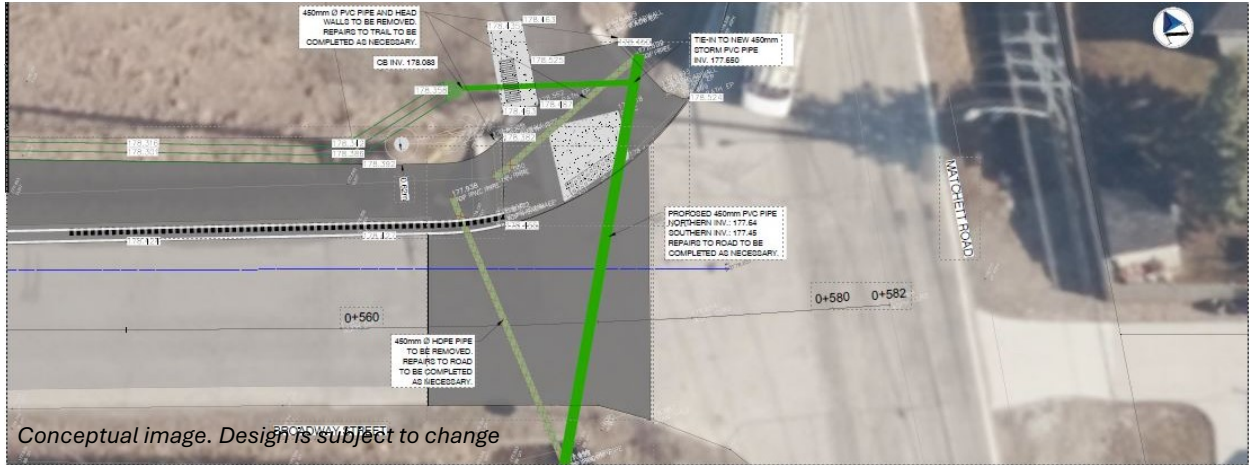
Connection with existing MTO Ojibway Parkway trail.

### Broadway Street to Beech Avenue and Matchett Road

The multi-use path will intersect with Beech Street and includes sidewalk tie-ins and repairs to the approach way. Bollards and tactile strips will be installed at the intersection of Broadway Street and Beech Street. The multi-use path will connect into Matchett Road, including removal and repairs to the road approach at this intersection, sidewalk tie ins, addition of tactile strips, a new bench and connection into the City of Windsor Matchett Road Multi-Use Trail.



Intersection with Beech Street.



Connection with Matchett Road.

### MALDEN PARK TRAILHEAD DESIGN

The Malden Park Trailhead will be installed at the Matchett Road entrance to Malden Park and will include benches, garbage receptacles and wayfinding signage. The trailhead will be near one of the park’s public parking lots and Transit Windsor bus stops.

The trailhead sign will comply with City of Windsor design guidelines.



The project team is committed to limiting impacts to nearby residents and businesses during construction and will keep the community informed as the design and construction plans are finalized.

**For more information about the Gordie Howe International Bridge project** visit

[GordieHoweInternationalBridge.com](http://GordieHoweInternationalBridge.com) or call 1-844-322-1773. Follow us on X at [x.com/GordieHoweBrg](https://x.com/GordieHoweBrg), like us on Facebook at [facebook.com/GordieHoweBridge](https://facebook.com/GordieHoweBridge) and connect with us on LinkedIn at [linkedin.com/company/wdba-apwd](https://linkedin.com/company/wdba-apwd).