

As part of the Gordie Howe International Bridge project, just over three kilometres of Sandwich Street in Windsor, Ontario will be reconstructed by Bridging North America (BNA). The Sandwich Street reconstruction work area stretches from south of the Rosedale Avenue roundabout past Ojibway Parkway to McKee Road. Once complete, the City of Windsor will be responsible for maintaining the street. This work includes a number of improvements for the area.

**NEW STREET AND SIDEWALKS:** The existing street and sidewalks along the reconstruction stretch are being removed and replaced with a modern finish and built to meet accessibility standards. This includes improving visibility and increasing the turning radius at the Sandwich Street and Chappell Avenue intersection as well as the intersection at Sandwich Street and Prince Road.

**BICYCLE AND MULTIPURPOSE LANES:** New bicycle and multipurpose lanes are included in the design to improve cyclist safety and options for active transportation in the area. These lanes will connect to the Canadian Port of Entry and additional pathways will connect into the localized trail system.

**NEW STORMWATER SEWER:** A new underground storm sewer is being constructed between Ojibway Parkway and McKee Road.

**COLLABORATION WITH THE CITY OF WINDSOR:** Sandwich Street reconstruction designs have been reviewed by City of Windsor staff, meet municipal standards and follow the Sandwich Heritage Conservation District, the Community Improvement Plan and where needed, the Heritage Alteration Permit requirements and process.

## RECONSTRUCTION

Sandwich Street reconstruction started in September 2023 and is taking place in a phased approach with the goal of full completion in 2024:



*Sandwich Street Phase One reconstruction.*

### Phase One: McKee Road to Ojibway Parkway intersection

- Work began in March 2024 which included a full closure between McKee Road and the intersection of Ojibway Parkway and Sandwich Street.
- This work is now complete and reopened to traffic.



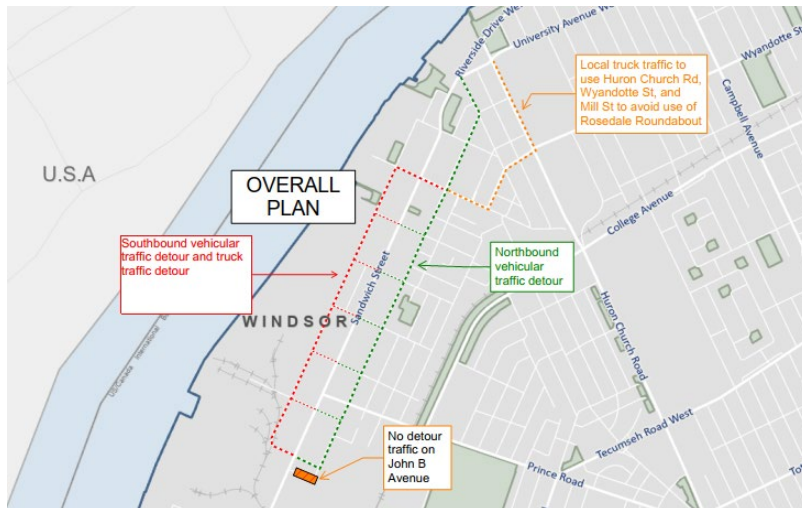
Above: Sandwich Street Phase Two reconstruction.

### Phase Two: Ojibway Parkway to Chappell Avenue

- The remaining segment of Phase Two between ETR and Ojibway Parkway is ongoing.
- Concrete paving is underway in the northbound lanes.
- Remaining curbs, driveways and landscaping to follow, along with completion of the remaining section closest to ETR.
- Temporary lane closures are in place. Two-way traffic and access to businesses is being maintained at all times.

### Phase Three: Chappell Avenue to the Rosedale Avenue roundabout

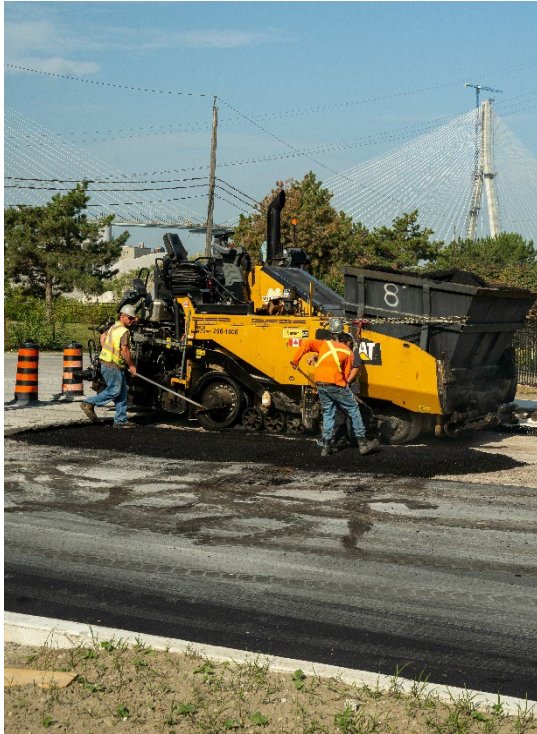
- Watermain installation is now complete.
- Construction progress continues in each section:
  - Chappell Avenue to Prince Road
  - Prince Road to South Street
  - South Street to Brock Street
  - Brock Street to Chewett Street.



Map of Phase Three reconstruction area and detours.

- Work is in advanced stages in the western portion with surface asphalt being placed, along with landscaping and light pole installations.
- Curb, sidewalk and driveway removals are taking place in the eastern portion followed by grading, forming and concrete work. Asphalt base layers are nearing completion.
- **Traffic is being detoured as follows:**
  - Non-truck traffic will use Peter Street for northbound travel and Russell Street for southbound travel.
  - All truck traffic will use Russell Street.

## CONSTRUCTION MITIGATIONS



The project team is committed to continued consultation and engagement with the community as plans for Sandwich Street reconstruction work move forward.

Measures are being taken to minimize the impact of construction in accordance with the commitments in the approved Environmental Assessment Report and Federal Screening Report in Canada. Construction mitigation measures include:

### VIBRATION MONITORING

BNA launched a free Vibration Monitoring Program for certain properties in February 2023 that monitors construction impacts to the heritage building area located between Chappell Avenue and the Rosedale Avenue roundabout. Vibration monitoring equipment will be installed throughout the construction zones and may be placed around or inside heritage structures to track levels of vibration and prevent damage.

Eligible property owners have been contacted directly to participate in the program. Following completion of construction in the segments identified above, follow up assessments will be undertaken and will be scheduled over the coming months.

### DUST CONTROL

BNA will minimize dust during construction by:

- conducting ongoing dust monitoring
- regular road sweeping and watering
- use of tarps for material transport
- assessment and accommodation of activities during periods of high winds, as needed.

### NOISE CONTROL

Construction equipment will be maintained, and all efforts will be used to reduce noise during the construction period.

**For more information about the Gordie Howe International Bridge project** visit [www.GordieHoweInternationalBridge.com](http://www.GordieHoweInternationalBridge.com) or call 1-844-322-1773. Follow us on X at [www.x.com/GordieHoweBrg](https://www.x.com/GordieHoweBrg), like us on Facebook at [www.facebook.com/GordieHoweBridge](https://www.facebook.com/GordieHoweBridge) and connect with us on LinkedIn at [www.linkedin.com/company/wdba-apwd](https://www.linkedin.com/company/wdba-apwd).