



PONT INTERNATIONAL  
**Gordie Howe**  
INTERNATIONAL BRIDGE

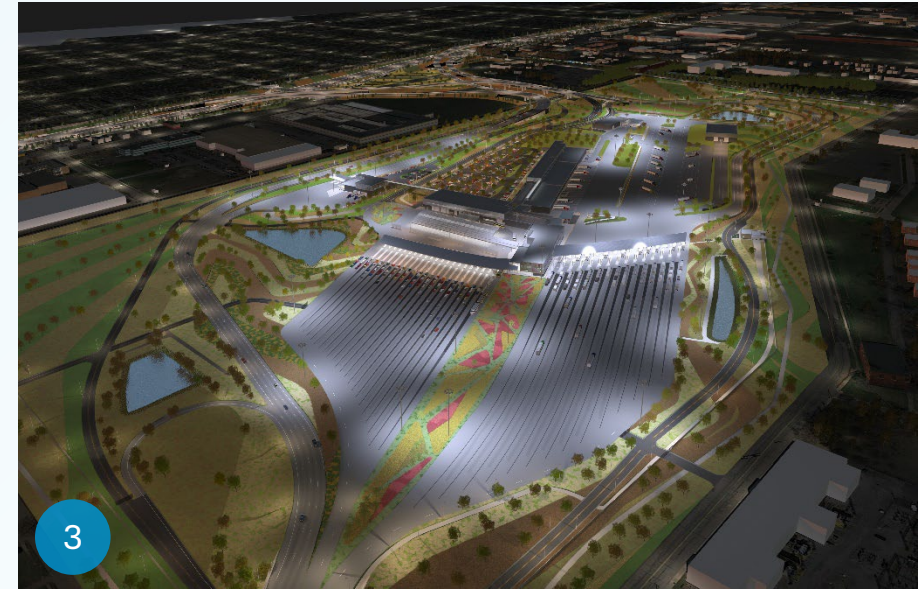
# Public Information Meeting

September 24, 2024



# Project Components

1. Gordie Howe International Bridge
2. Canada Port of Entry
3. US Port of Entry
4. Michigan Interchange



# Customer Centricity

- The Gordie Howe International Bridge will provide a system of travel that is customer-centric, easy to use and that makes travelling from point A to point B as simple as possible.



Construction Update

# Bridge Sites



Construction Update

# Ports of Entry



Construction Update

# Michigan Interchange (I-75)



# Sandwich Street Reconstruction

Three kilometres of Sandwich Street are being reconstructed from south of the Rosedale Avenue roundabout past Ojibway Parkway to McKee Road.

This includes:

- New streets and sidewalks
- Cycling infrastructure
- New stormwater sewer
- Streetscape enhancements



# Construction Progress and Traffic Impacts





# Construction Mitigations

- ✓ Vibration Monitoring Program
- ✓ Dust control
- ✓ Noise control



# Community Benefits Plan



**The Workforce Development  
and Participation Strategy**



**The Neighbourhood  
Infrastructure Strategy**

# Workforce Development and Participation Strategy

Cumulative Totals from September 2018 – June 2024



**12,950+**

individuals oriented to the project in Canada and the US

**42%** are local



**730+**

- apprentices/pre-apprentices assigned to the project



**385+**

- co-operative learning experiences have been provided on the project



**280+**

- local businesses engaged on the project

# Neighbourhood Infrastructure Strategy



# Sandwich Street \$1 Million Enhancements

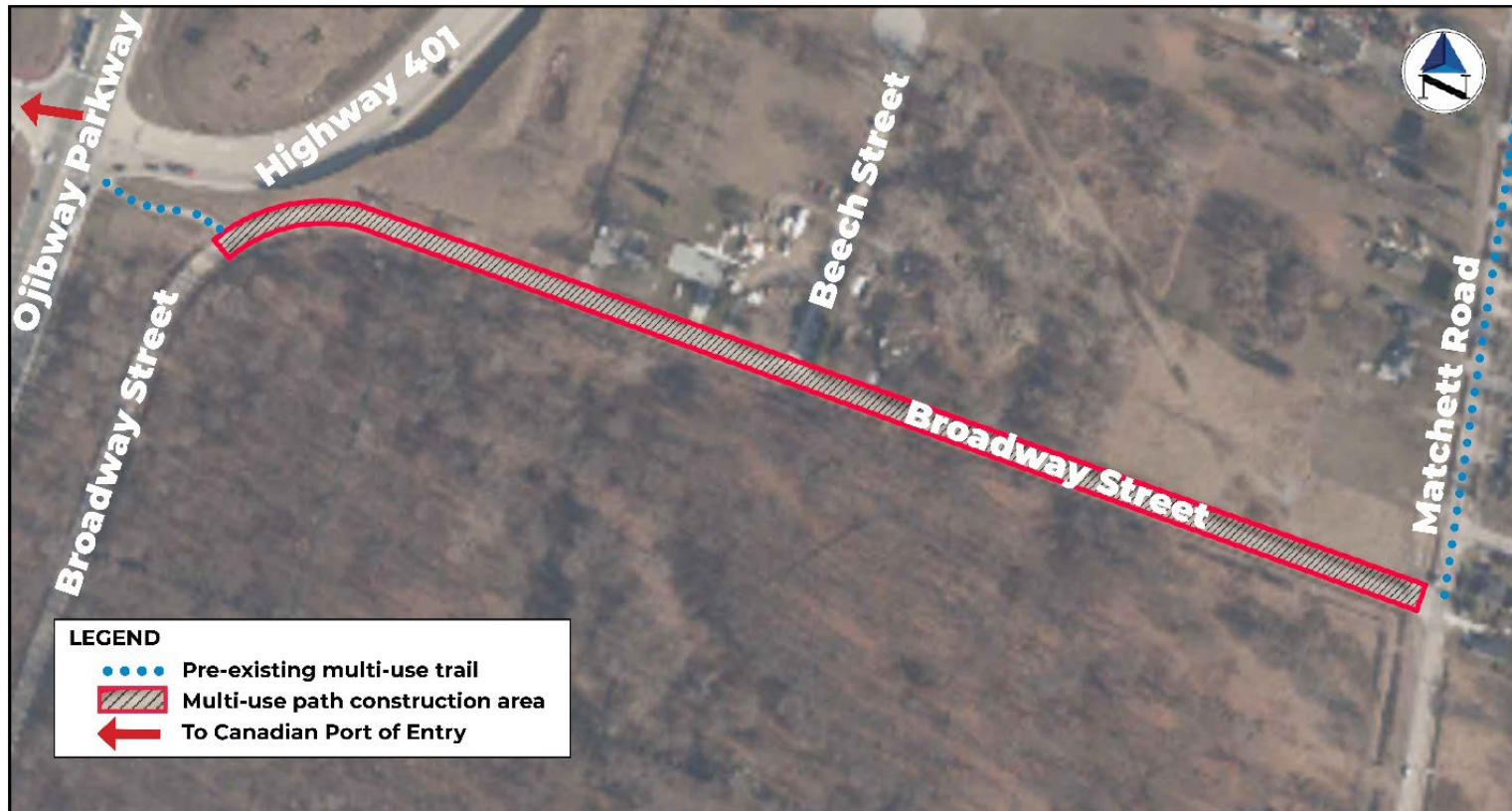
- **Landscaping enhancements:** soil cells to support tree canopy and low concrete planters
- **Redesigned gathering spaces:** benches and trees incorporated into key areas in the BIA.
- **Hardscaping features:** pre-cast pavers in a heritage finish and pattern, heritage tactile strips and tree grates.



# Broadway Street Multi-Use Path

A new multi-use path will be constructed along Broadway Street to connect the Canadian POE to Malden Park and existing local trail networks.

Share your feedback by submitting an online form: [GordieHoweInternationalBridge.com](http://GordieHoweInternationalBridge.com)



# Design and Construction Considerations

The plans to design and construct a multi-use path on the north side of Broadway Avenue was created in consideration of:



Facilitating and enhancing connections into existing active transportation infrastructure and alignment with Master Plans



Minimizing impacts to Species-at-Risk and other ecology



Identifying a location with a Right-of-Way that can accommodate the required minimum path widths and required multi-use path features. No private property is required to accommodate the multi-use path.










Incorporating feedback from relevant jurisdictions to ensure design meets applicable standards



Initiative budget

# Connection to Ojibway Parkway

-  SWALE
-  STORM SEWER
-  REMOVALS
-  STORM CULVERT
-  RUMBLE STRIPS
-  STORM CATCHBASIN
-  EXISTING TRAIL

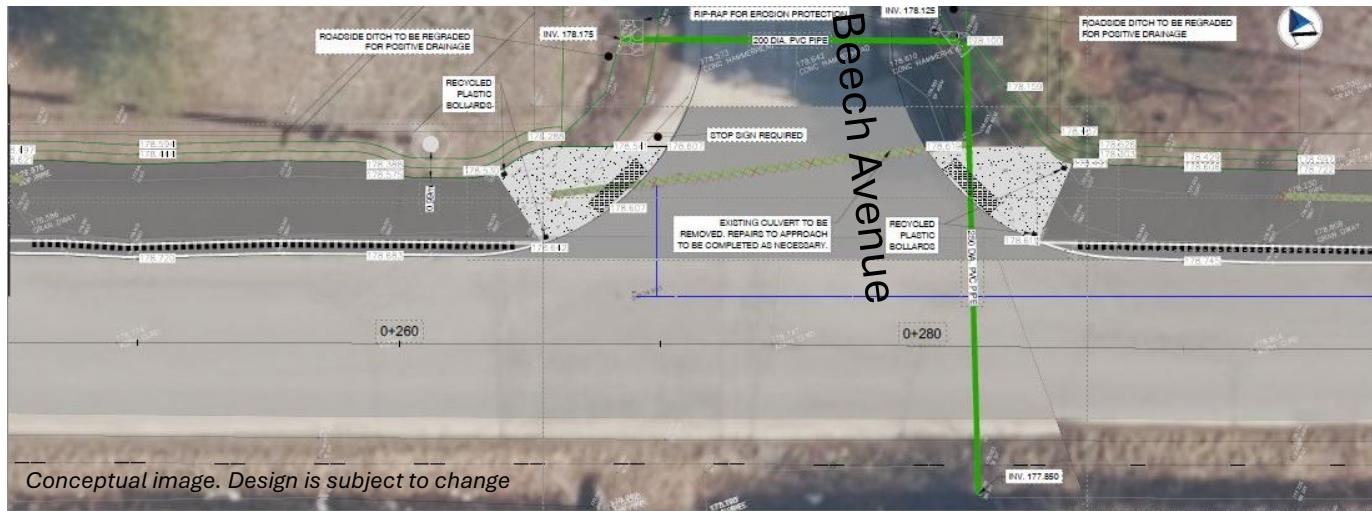




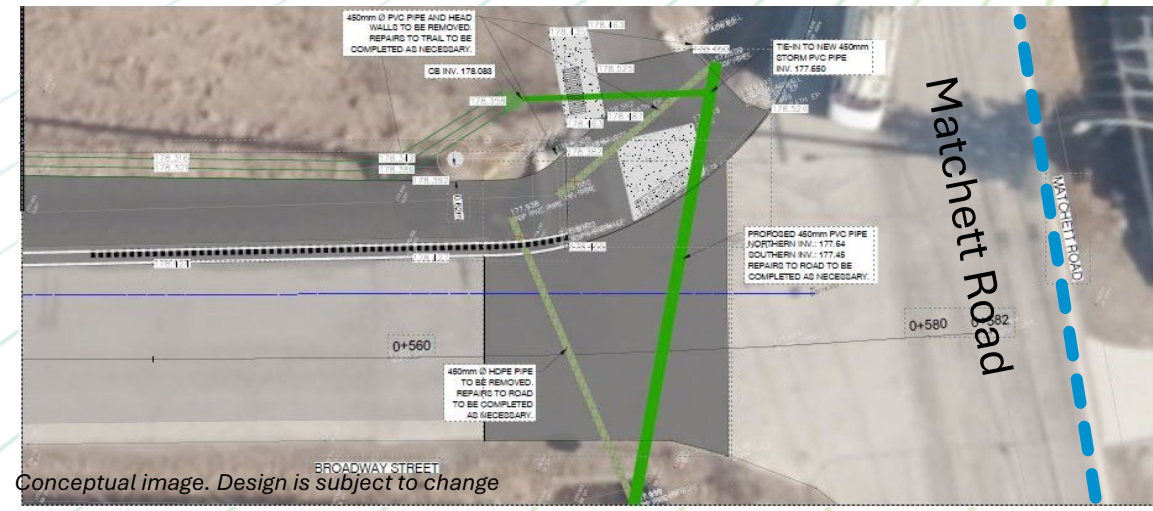
# Community Benefits Plan

# To Beech Avenue and Matchett Road

- SWALE
- STORM SEWER
- REMOVALS
- STORM CULVERT
- RUMBLE STRIPS
- STORM CATCHBASIN
- EXISTING TRAIL






Conceptual image. Design is subject to change



Conceptual image. Design is subject to change

# Malden Park Trailhead



-   GARBAGE AND RECYCLING RECEPTACLES
-  MALDEN PARK TRAILHEAD LOCATION

Conceptual image. Design is subject to change

# Construction: What to Expect

- Anticipated to begin in fall 2024
- Between 7 a.m. – 7 p.m. and will occur within the municipal right of way.
- Access to businesses and residences will be maintained.





Conceptual Image



Conceptual Image



Visual Art Program

**Commemorative  
Art Commission:  
Jordan Sook  
*Make a Joyful Noise***

# WDBA Environmental, Social and Governance (Esg) Plan Reporting



Healthy environment



Enhance local community



Thriving Corporate culture



Responsible corporate conduct

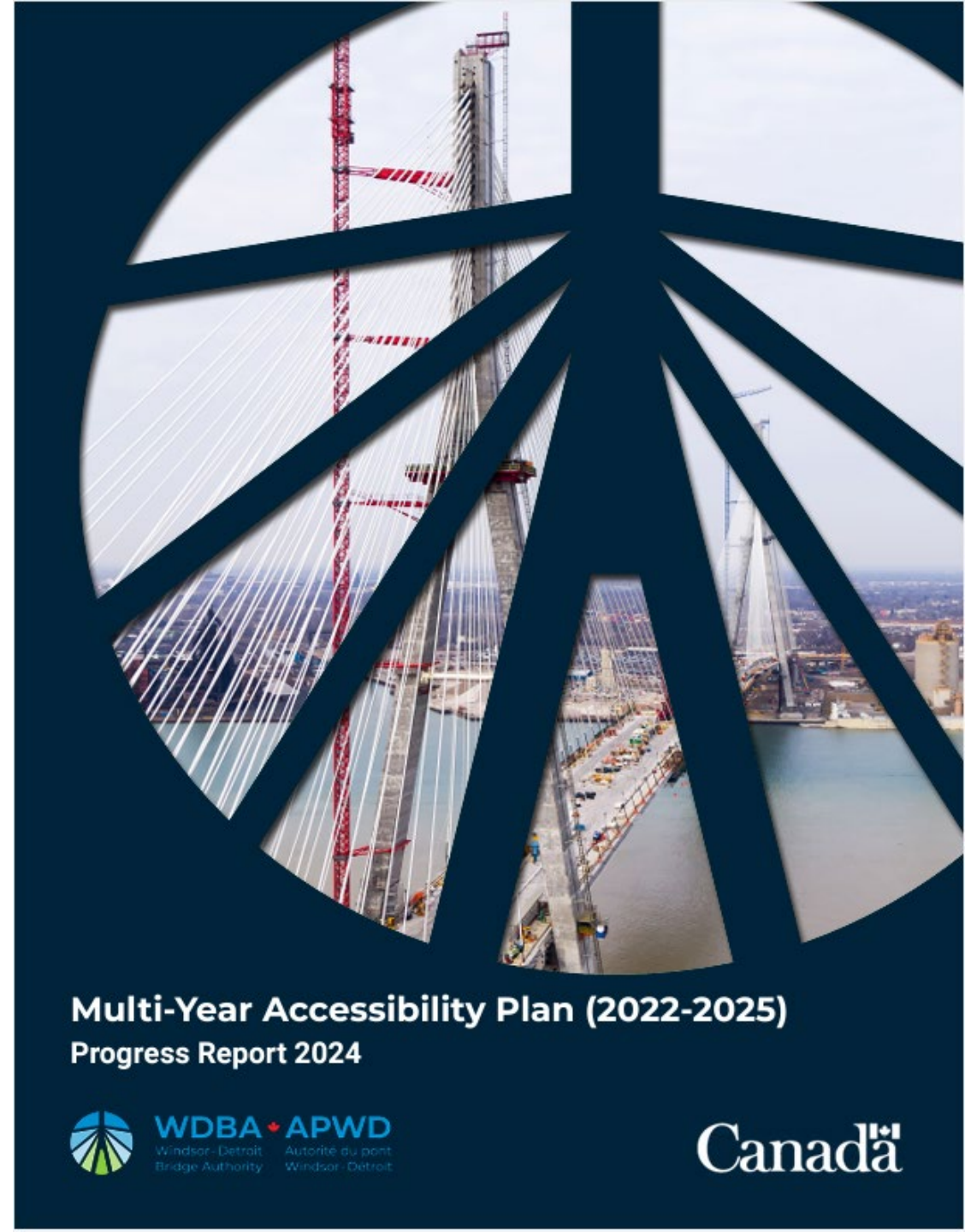
Quarterly and annual reports available online at  
[GordieHoweInternationalBridge.com](https://www.gordiehoweinternationalbridge.com)



# WDBA Accessibility Plan Progress Report



Share your feedback online by visiting:  
[GordieHoweInternationalBridge.com](https://GordieHoweInternationalBridge.com)  
Survey closes October 4, 2024



Multi-Year Accessibility Plan (2022-2025)  
Progress Report 2024



Canada

# Community Office Hours



## Sandwich Community Office

- 3201 Sandwich St.  
Windsor



## Southwest Detroit Community Office

- 7744 W Vernor Hwy.  
Detroit

- **Community Office Hours:**
- **Tuesdays 10:00 a.m. – 4:00 p.m.**
- **Thursdays 10:00 a.m. – 4:00 p.m.**
  
- After-business appointments may be available upon request.



PONT INTERNATIONAL  
**Gordie Howe**  
INTERNATIONAL BRIDGE

# Stay connected



[gordiehoweinternationalbridge.com](https://gordiehoweinternationalbridge.com)



[info@wdbridge.com](mailto:info@wdbridge.com)



1-844-322-1773



Gordie Howe Bridge



@gordiehowebrg



@gordiehowebridge



@gordiehowebrg



WDBA-APWD

## Visit our offices

- WDBA Office  
100 Ouellette Ave., Suite 400  
Windsor, ON
- Southwest Detroit Community Office  
7744 W Vernor Hwy.  
Detroit, MI, 48209
- Sandwich Community Office  
3201 Sandwich St.  
Windsor, ON  
N9C 1A8