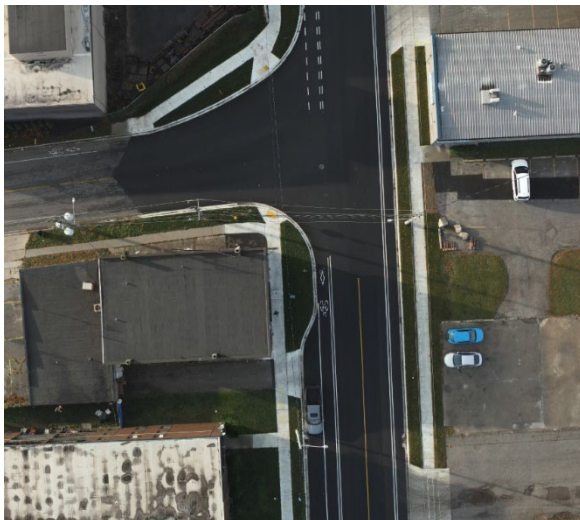


Funded by the Gordie Howe International Bridge project, three kilometres of Sandwich Street is being reconstructed from the Canadian Port of Entry at McKee Avenue to the Rosedale Avenue roundabout.



Sandwich Street reconstruction progress facing east from Mill Street.



Sandwich Street and Prince Road intersection.

Sandwich Street reconstruction work began in summer 2023 using a phased approach. Crews have made significant progress, with two of three phases now complete. As of fall 2024, Sandwich Street is open to traffic from McKee Road to Chippawa Street. Work within this section included new street surface, sidewalks, new stormwater sewer, and cycling infrastructure that links into the Canadian Port of Entry and multi-use path on the bridge. Visibility improvements and an increased turning radius were included at the intersections of Sandwich Street and Chappell Avenue and Sandwich Street and Prince Road.

Work is steadily progressing on the final stretch of Sandwich Street from Chippawa Street to the Rosedale Avenue roundabout, which includes the Sandwich Towne Business Improvement Area (BIA). The reconstruction includes new street surface, sidewalks, bike lanes, landscaping and enhancements.

In addition to the reconstruction work, the BIA is being enhanced through a \$1 million Community Benefits Plan investment. These enhancements include landscaping, hardscaping and gathering spaces that will result in a vibrant area for residents and visitors. Some of these features are underway including installation of concrete planters, soil cells (underground infrastructure to support healthy tree growth), and pre-cast pavers in a historical colour creating feature areas at key intersections.



Sandwich Street between Ojibway Parkway and McKee Road.

It is anticipated that the remaining work on Sandwich Street will wrap up by the end of December 2024. **Remaining construction activities include:**

- Brock Street to Mill Street: sidewalks are nearing completion along with installation of pavers and landscaping as well as installation of streetlights, traffic signals, signage and line painting.
- Mill Street to Chewett Street: Street light installation and landscaping activities are nearing completion, as well as sign installation and line painting.

The City of Windsor is also investing in the area with additional enhancements including aesthetic crosswalk improvements. This work will be coordinated with the project team to minimize inconvenience.

TRAFFIC IMPACTS

Sandwich Street is closed from Chippawa Street to Chewett Street. It is anticipated that this section will be reopened to traffic in December 2024. **The following traffic detour is in place around this section:**

- Non-truck traffic will use Peter Street for northbound travel and Russell Street for southbound travel.
- All truck traffic will use Russell Street.

For more information about the Sandwich Street reconstruction work and the Gordie Howe International Bridge project by visiting www.GordieHoweInternationalBridge.com or call 1-844-322-1773. Follow us on X at www.x.com/GordieHoweBrg, like us on Facebook at www.facebook.com/GordieHoweBridge and connect with us on LinkedIn at www.linkedin.com/company/wdba-apwd.