



PONT INTERNATIONAL  
**Gordie Howe**  
INTERNATIONAL BRIDGE

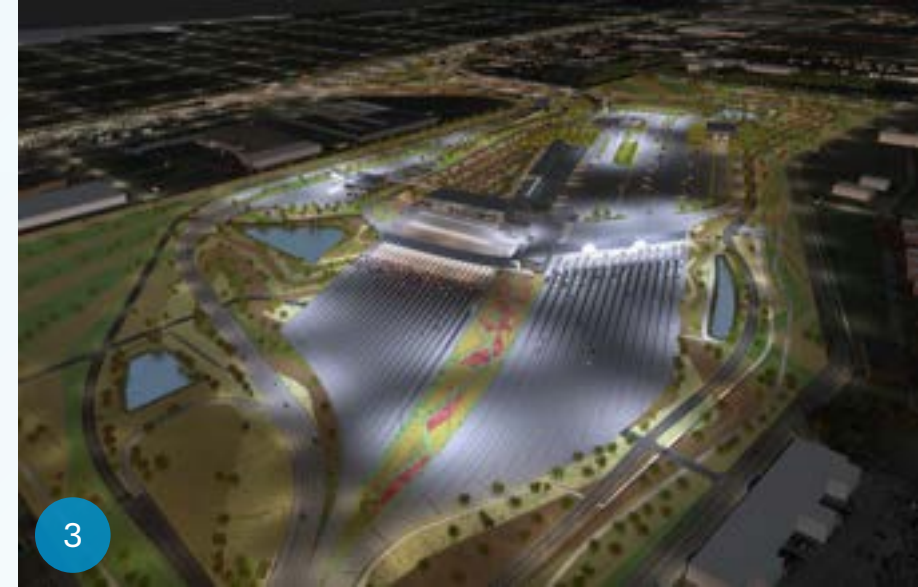
# Public Information Meeting

December 4, 2024



# Project Components

1. Gordie Howe International Bridge
2. Canada Port of Entry
3. US Port of Entry
4. Michigan Interchange



Project Features

# Customer Centricity

- ✓ **Easy**
- ✓ **Simple**
- ✓ **Efficient**



# Tolling and Accounts

- **Rate based on axle of vehicle class**
- **Combination of manual, automatic and electronic toll collection**
- **Prepaid and post-paid accounts**
- **Customer service call centre**
- **Bilingual English/French services**



Construction Update

# Bridge Sites



Construction Update

# Ports of Entry



Canadian Port of Entry

Construction Update

# Michigan Interchange (I-75)



Construction Update

# Sandwich Street Reconstruction





# Construction Mitigation

- ✓ Vibration Monitoring Program
- ✓ Dust control
- ✓ Noise control



# Community Benefits Plan



**The Workforce Development  
and Participation Strategy**



**The Neighbourhood  
Infrastructure Strategy**

# Workforce Development and Participation Strategy

## Cumulative Totals from September 2018 – September 2024



**13,550**

individuals oriented to the project in Canada and the US



**745+**

- apprentices/pre-apprentices assigned to the project



**405+**

- co-operative learning experiences have been provided on the project



**285**

- local businesses engaged on the project

# Neighbourhood Infrastructure Strategy



# 2025 Community Organization Investment

## NOW ACCEPTING APPLICATIONS



### **\$150,000 (CDN) available in Windsor and Detroit**

- \$5,000 - \$50,000 (CDN) per funding request
- funding will go towards events, programming and infrastructure improvements

### **To apply, the organization must be:**

- located in or provide services to the project host communities
- a registered charity or non-profit organization or has a trustee/fiduciary relationship with a registered charity or non-profit.

**Apply by 4 p.m. on Wednesday, January 29, 2025.**

Visual Art Program

# Indigenous Art Commission: Michael Belmore *Aazhoge*



*Conceptual rendering*

Visual Art Program

# Aesthetic Bridge Lighting



# Recognition and Awards



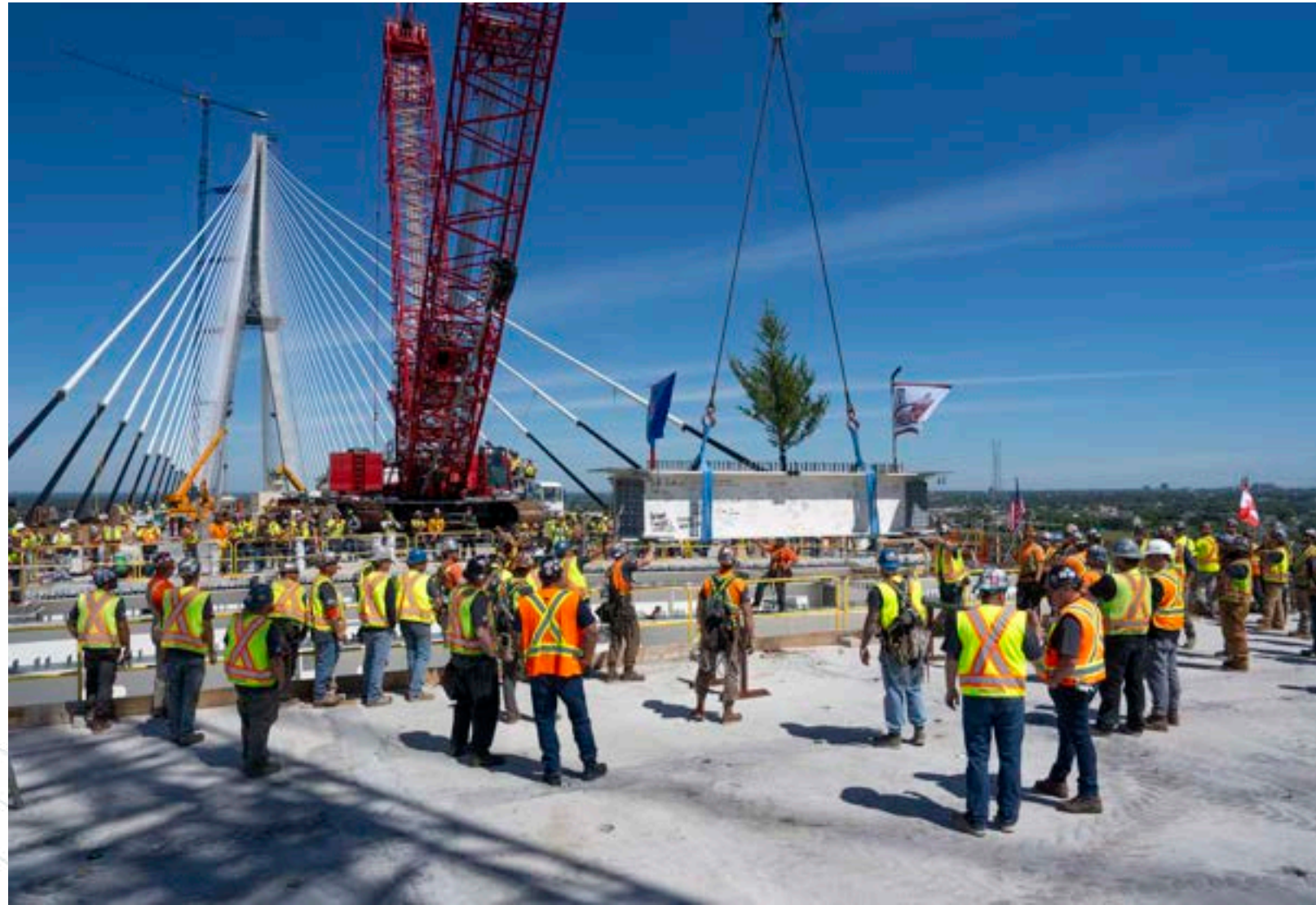


# Opening Day Planning

The team is starting to think about plans for Opening Day celebrations and events.

Share your feedback by:

- Comment card
- Email to [info@wdbridge.com](mailto:info@wdbridge.com)



# Community Office Hours



## Sandwich Community Office

- 3201 Sandwich St.  
Windsor



## Southwest Detroit Community Office

- 7744 W Vernor Hwy.  
Detroit

## Community Office Hours:

- Tuesdays 10:00 a.m. - 4:00 pm
- Thursdays 10:00 a.m. - 4:00 p.m.

After-business appointments are available upon request.



PONT INTERNATIONAL  
**Gordie Howe**  
INTERNATIONAL BRIDGE

# Stay connected



[gordiehoweinternationalbridge.com](https://gordiehoweinternationalbridge.com)



[info@wdbridge.com](mailto:info@wdbridge.com)



1-844-322-1773



Gordie Howe Bridge



@gordiehowebrg



@gordiehowebridge



@gordiehowebrg



WDBA-APWD

## Visit our offices

- WDBA Office  
100 Ouellette Ave., Suite 400  
Windsor, ON
- Southwest Detroit Community Office  
7744 W Vernor Hwy.  
Detroit, MI, 48209
- Sandwich Community Office  
3201 Sandwich St.  
Windsor, ON  
N9C 1A8