

Gordie Howe International Bridge

MOMENTUM

Quarterly Newsletter issued by: Windsor-Detroit Bridge Authority

August 2024

The Gordie Howe International Bridge project between Windsor, Ontario and Detroit, Michigan will help move goods and people more efficiently at this important trade gateway. Managed by Windsor-Detroit Bridge Authority (WDBA) and working in collaboration with the State of Michigan, the project is being delivered through a public-private partnership (P3) which will see Bridging North America (BNA) design, build, finance, operate and maintain the bridge.

IN THIS EDITION

- Deck Connected - What's Next?
- People Profile
- Sandwich Street Reconstruction
- Road Bridge Landscaping and Pedestrian Bridge Arches
- In The Community
- Make A Joyful Noise: Commemorative Art Concept
- Mentorship In Action
- Kid Zone

CONTACT US

Have a question about the Gordie Howe International Bridge project?

Meet with our team at our Sandwich Community Office at 3201 Sandwich St. or Southwest Detroit Community Office at 7744 W Vernor Hwy.

Available office hours can be found on [GordieHoweInternationalBridge.com](https://www.GordieHoweInternationalBridge.com).

Call us toll-free at 1-844-322-1773, email us at info@wdbbridge.com, or message us through any of the project social media accounts.



DECK CONNECTED - WHAT'S NEXT?

The Gordie Howe International Bridge deck is connected. Crews installed the final segment in mid-June marking the bridge as an official international crossing. The Gordie Howe International Bridge will open to traffic in fall 2025. So, what's next?

Electrical

Lighting system installation is underway and includes aesthetic lighting, roadway lighting, pedestrian lighting, navigational lighting for vessels and aircraft and maintenance lighting. Instrumentation system installation is also underway and includes a bridge monitoring system, a weather station, fire alarm systems, security systems and an intelligent transportation system to enhance traffic management efficiency.

Drainage

The bridge has drainage outlets along both sides of the deck that allow stormwater to flow away from the deck and into underground drainage structures on either end of the bridge. Both the Canadian and US bridge sites have stormwater management ponds that collect and treat water before it is released into the river.

Fire Suppression

A semi-automatic dry standpipe fire suppression system will be integrated. Fire pumps are installed in a weather-protected enclosure and stainless-steel dry pipes, fire hydrants and electrically actuated valves are placed throughout the bridge deck. If a fire were to start, crews would open the valve in the enclosure, allowing water to run through the pipes to the fire hydrants installed throughout the crossing.

Re-Stressing of Stay Cables

With the bridge deck now connected, re-stressing of the 216 stay cables connecting the deck to the towers is required to accommodate the changes in weight load. This is expected to be complete by the end of summer 2024.

Road Surface Work

Crews continue to pour the concrete for the Canadian and US approach spans that connect the Ports of Entry to the bridge. Once both spans are complete, work is expected to begin in fall 2024 on the road surface layer on the concrete bridge deck.

Safety and Emergency Features

The bridge deck includes design elements such as barriers separating vehicular traffic from the multi-use path and means restriction fencing to prevent items from being thrown from the bridge into the river. The multi-use path will feature security cameras and three emergency call boxes to help keep users safe.

Falcon Nesting Box

A peregrine falcon nesting box is one of the last elements that will be put in place. The nesting box design is complete, and it will be constructed and installed in 2025.



PEOPLE PROFILE

MEET CHRISTIE FARRAH

Christie is an Environmental Coordinator at WDBA. She graduated from the University of Windsor with a Bachelor of Science in Environmental Science, and moved to Edmonton, Alberta, for work. When she heard about a job opportunity on the Gordie Howe International Bridge, she moved back home to Windsor, Ontario to work on the project.

Q. What type of work are you doing on the project?

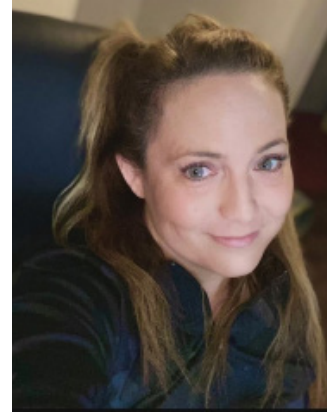
I am responsible for conducting oversight activities related to environmental compliance. This includes site inspections, data collection and providing recommendations relating to the project's Environmental Management System and various environmental mitigation and monitoring plans. My areas of focus include sediment and erosion control, soil quality and excess soil management, water quality, air quality, noise/vibration, natural heritage, wildlife, species at risk and archaeology.

Q. What is the most rewarding part of working on the project?

What I have found most rewarding about this job is being part of a team that genuinely cares and puts their all into ensuring various environmental aspects of the construction process are prioritized.

Q. What do you wish other people knew about the project?

With the Gordie Howe International Bridge being built so close to Ojibway Park and Black Oaks Heritage Park, it was essential that mitigation measures were put in place to protect wildlife from entering the construction zone. Many species at risk (SAR) reside within the Ojibway Prairie Complex which has one of the highest SAR concentrations in Ontario. Some of these include snapping turtles, Eastern Foxsnakes and the Butler's Gartersnakes. BNA and WDBA worked together to install a permanent wildlife fence around sensitive areas of the site which has been very successful in saving lives by deterring wildlife.



CHRISTIE FARRAH
Environmental Coordinator – Windsor-Detroit Bridge Authority

SANDWICH STREET RECONSTRUCTION

Funded through the Gordie Howe International Bridge project, BNA is reconstructing Sandwich Street from the Canadian Port of Entry to the Rosedale Avenue roundabout. This work is being undertaken in a phased approach that started in summer 2023 with the goal of achieving full completion in 2024. This work includes asphalt paving and sidewalks, the addition of new bicycle lanes and enhanced streetscaping within the Sandwich BIA district from Brock Street through Detroit Street.

Construction activities are well underway in various locations:

McKee Road to Ojibway Parkway Intersection:

- Reopened to traffic in mid-August 2024. Multi-use path paving and landscaping work to be finished shortly.

Ojibway Parkway Intersection to Essex Terminal Railway (ETR) Tracks:

- Construction of southbound lanes is complete.
- Northbound lane reconstruction has begun with road and driveway removals and catch basin/culvert installation.
- Curb, driveways and island installation will follow, along with placement of the road base. Concrete paving is anticipated for late September.

Chappell to Chippawa Street:

- Curb, sidewalk, driveway and boulevard installation are well underway and complete in some sections with work progressing east towards Chippawa Street.
- Base layer of asphalt was placed in late-August. Top soil and seeding to follow with surface asphalt and line painting.

Chippawa to Mill Street:

- Road cut and removals were completed in late August with curb installation now underway.
- Road base and fine grading will follow along with placement of base asphalt and sidewalk/driveway construction.
- Surface asphalt and landscape/streetscape work to follow.

Mill to Chewett Street:

- Road cut and removals to begin followed by curb installation.
- Road base and fine grading will follow along with placement of base asphalt and sidewalk/driveway construction.
- Surface asphalt and landscape/streetscape work to follow.

Access to businesses is being maintained. Traffic will be detoured around the active work zones:

- All truck traffic will use Russell Street for both directions of travel.
- All non-truck traffic will use Peter Street for northbound travel and Russell Street for southbound travel.

Check the Sandwich BIA Facebook page for information on promotions and events. For more information about Sandwich Street reconstruction work, visit the project website at [GordieHoweInternationalBridge.com](https://www.gordiehoweinternationalbridge.com).



IN THE COMMUNITY

Meet-A-Machine

In June, the WFCU Centre held its annual Meet-A-Machine event hosted by the City of Windsor. Kids of all ages had a chance to explore construction equipment, emergency vehicles and many more machines. Attendees were excited to learn about some of the machines being used to construct the Gordie Howe International Bridge. Project staff handed out construction hats and activity sheets to help kids feel like a construction worker for the day.



Public Information Meetings

Windsor-Detroit Bridge Authority and Bridging North America will hold Public Information Meetings on September 24, 2024, in Windsor at Mackenzie Hall and on September 26, 2024, in Detroit at our Southwest Detroit Community Office.

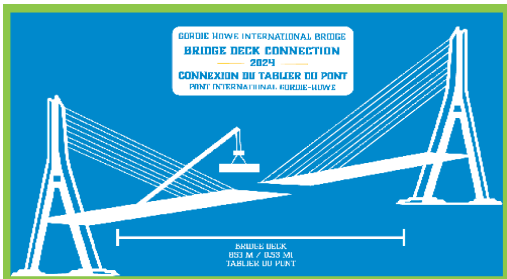
The meetings will provide the latest updates on Canadian and US construction activities and the implementation of the Gordie Howe International Bridge Community Benefits Plan.

Construction of the Broadway Street multi-use path in Windsor is anticipated to begin in fall 2024. Extensive coordination has been undertaken with the City of Windsor and Ontario Ministry of Transportation to identify the preferred location for the path and develop the proposed design. Learn more at the Windsor Public Information Meeting.

Presentations will begin at 3:30 p.m. and 5:15 p.m. followed by a question-and-answer session.

Commemorative Patches – Get Yours

Three patches in our series of collectable commemorative patches are now available. The newest patch celebrates the recent bridge deck connection. These patches celebrate important project activities and help tell our story.



Pick up the patches at our Community Offices in Sandwich and Southwest Detroit, open Tuesdays and Thursdays from 10:00 a.m. – 4:00 p.m.

Southwest Detroit Community Office

7744 West Vernor Highway
Detroit, Michigan

Sandwich Community Office

3201 Sandwich Street
Windsor, Ontario

ROAD BRIDGE LANDSCAPING AND PEDESTRIAN BRIDGE ARCHES

Connecting the US Port of Entry to I-75 in Detroit requires several long connecting ramps plus changes to the area's pedestrian and road bridges. This work affects approximately three kilometres or 1.8 miles of I-75 between Springwells Street and Clark Street. Construction of all four road bridges over I-75 is complete providing the public with north-south access within the community. These four road bridges include:

- Springwells Street
- Green Street
- Livernois Avenue (two-way traffic)
- Clark Street.

Landscaping work has begun on the road bridges and includes self-irrigating planter boxes. Over the next few months, native shrubs, grasses, and herbaceous vegetation will be planted on the road bridge planter boxes.



All five pedestrian bridges are under construction in various stages. Locations include:

- Waterman Street
- Beard Street
- Solvay Street
- Junction Street
- Lansing Street.

Community consultation on the pedestrian bridge design occurred in 2019 and an arch design was selected as the community's design of choice. Installation of the arch feature has started on some of the pedestrian bridges. This work is ongoing and will be completed in spring 2025.



MAKE A JOYFUL NOISE: COMMEMORATIVE ART CONCEPT

In June, the project team was pleased to unveil the artistic concept for Jordan Sook's Commemorative Artwork, entitled "Make a Joyful Noise". The artwork recognizes and commemorates the region's role as a destination for freedom-seekers of African descent leaving behind slavery and oppression by travelling the Underground Railroad to Canada and symbolizes hope and freedom for past, current and future generations. The artwork is a three metre/nine-foot circular metal structure composed of replica church pews and intentional lighting. Through this concept, the artist signifies the network of institutions, connectivity and resilience, and a pathway through the use of:

- replica church pews to represent the role churches often played in offering assistance and safe harbour for those travelling from the southern US to freedom in the north
- the circular form to represent the idea of looking up to the sky, which provided direction to those travelling along the Underground Railroad
- lighting at night to help simulate the stars that aided navigation.

The artwork will be installed outside the Canadian Port of Entry's security perimeter and will be accessible to travellers as they enter and exit Canada using the multi-use path. Installation of the artwork will coincide with the opening of the Gordie Howe International Bridge. Sketches of the concept are on display at Art Windsor-Essex along with some of Jordan Sook's original works until fall 2024.



MENTORSHIP IN ACTION

The inclusion of public art in the Gordie Howe International Bridge project originated from input received during the Detroit River International Crossing (DRIC) study. Multiple artistic features have been incorporated into the project as a result of ongoing community feedback to integrate cultural and historical recognition features where possible. One of these artworks is the Indigenous Art Commission taken on by Anishinaabe artist Michael Belmore. Another is the Underground Railroad Commemorative Art Commission taken on by Jordan Sook.

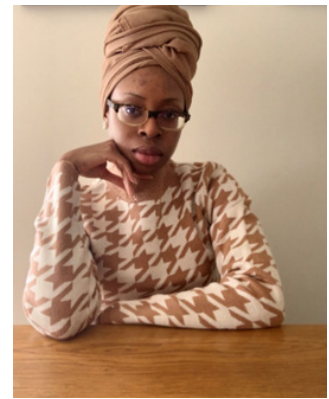
Both art commissions include a mentorship component where the artist has the opportunity to mentor a young Indigenous artist, or a young artist from the Black, African or Caribbean diaspora to teach them about the creative process that goes into commissioning and installing a large public artwork.

Naomi Peters of Caldwell First Nation was selected to undertake the Indigenous Art mentorship and Chidera Ikewibe, a Windsor resident, was selected to undertake the Commemorative Art mentorship.

Their mentorship experience includes sessions with the artists as well as with the project's public art consultants. Read more about their experiences working with the commissioned artists on [GordieHoweInternationalBridge.com](https://www.gordiehoweinternationalbridge.com).



Naomi Peters



Chidera Ikewibe

KID ZONE

Circle which option in each category doesn't belong

Ways to Cross the Bridge:



Cycling



Walking



Driving



Ice Skating

Connections to the Bridge:



Woodward Avenue



Trans Canada Trail



Michigan Interchange I-75



Ontario Highway 401

Design Features Included on the Bridge:



Multi-Use Path



Aesthetic Lighting



Hockey Rink



Stay Cables

Skilled Trades Workers on the Bridge Site:



Chefs



Electricians



Iron Workers



Operating Engineers

Machinery Used at the Bridge Site:



Crane



Forklift



Paver



Zamboni

