

Gordie Howe International Bridge

MOMENTUM

issued by Windsor-Detroit Bridge Authority



PONT INTERNATIONAL
**GORDIE
HOWE**
INTERNATIONAL BRIDGE



The Gordie Howe International Bridge project between Windsor, Ontario and Detroit, Michigan will help move goods and people more efficiently at this important trade gateway. Managed by Windsor-Detroit Bridge Authority (WDBA) and working in collaboration with the State of Michigan, the project is being delivered through a public-private partnership (P3) which will see Bridging North America design, build, finance, operate and maintain the bridge.

IN THIS EDITION

- Road Bridge Demolition
- Design Unveiled
- People Profile
- Community Benefits Update
- In the Community
- Kid Zone: Crossword
- On-Site

ROAD BRIDGE DEMOLITION

Approximately three kilometres or 1.8 miles of I-75 between Springwells Street and Clark Street will require modifications to accommodate the ramps connecting to the US Port of Entry (POE). As part of this work, over a dozen roadway and pedestrian bridges ranging in length from 30 to 518 metres or 100 to 1,700 feet will need to be constructed. Before the new road and pedestrian bridges can be built, the existing structures need to be removed.



Pre-demolition at Livernois Avenue bridge

On the weekend of December 6, 2019, the road bridges at Springwells Street, Clark Street and Livernois Avenue crossing I-75 were taken down. The demolition took place over a weekend to minimize traffic disruption and to allow sufficient time to protect the highway, remove the structures and conduct a thorough clean up. These three bridges will be reconstructed over 2020 and are expected to reopen in 2021.

Visit www.GordieHoweInternationalBridge.com to learn more about the bridge demolition and to watch our video of the demolitions.

**TOLL-FREE
NUMBER-
FREE FOR
CANADIAN AND
US CALLERS**



Have a question about the Gordie Howe International Bridge project?

Call us toll-free at
1-844-322-1773

Our team is here to listen and help provide callers the information they are looking for. The line is answered Monday through Friday from 8:30 a.m. to 4:30 p.m.

We are committed to responding to all public inquiries within three business days.



The Livernois Avenue bridge under demolition



Post-demolition at Livernois Avenue bridge

DESIGN UNVEILED

Following several months of consultation with the community, the project team announced the aesthetic design of five new pedestrian bridges that are part of the Michigan Interchange work. The pedestrian bridges will be located over I-75 at Solvay Street, Beard Street, Waterman Street, Junction Street and Lansing Street and will provide safe access to services within the community.

The design features a curved steel arch with a medium bronze finish. The bridges will be constructed of pre-cast concrete girders and concrete decks, walls and ramps and will have overhead LED lighting fixtures. Importantly, the bridges will be compliant with Americans with Disabilities Act standards. Bridging North America will undertake construction of the pedestrian bridges between 2020 and 2024.

Visit www.GordieHoweInternationalBridge.com to learn more about the pedestrian bridges and to watch our interview with Laura Aylsworth, Michigan Interchange Lead Engineer.



Daytime view from I-75



Nighttime view from inside the bridge

PEOPLE PROFILE

MEET TOM VAN BREUKELLEN

Meet Tom van Breukelen, Field Engineer for the Canadian Port of Entry, Bridging North America. Tom came from the Netherlands to join the project. In the Netherlands, Tom studied Civil Engineering with a Masters in Construction Management and Engineering at Delft Technical University. After his studies Tom started working for Fluor on several multi-billion-dollar infrastructure projects. Tom says, "Building bridges has been a dream and passion since I was little. So being part of the construction of the Gordie Howe International Bridge is an amazing experience."

Q What type of work are you doing on the project?

I spend my days preparing the construction of the Canadian Port of Entry. My experience is soil and soil improvement and as such, I am currently focused on the fill and surcharge activities that are ongoing. I make sure that our people and our subcontractors have all the information they need to do the job. If issues arise, I coordinate to find an acceptable and safe solution, while also making sure this is well-documented and schedules are kept.

Q What is the most rewarding part of working on the project?

Two rewarding parts jump out straight away. First is the landmark we are building. The Gordie Howe International Bridge will be here for generations to come. Being able to say I helped build this bridge drives me every day. Second it is the speed of the project. Everyday the site changes. The site is unrecognizable from what was there a month ago. For me, this is very exciting.

Q What do you wish other people knew about the project?

Although the bridge is the landmark everyone will be pointing at for years to come, the Ports of Entry also deserve recognition. The complexity and size of each of these is enormous and would dwarf most other projects in the area. The construction of multiple buildings, canopies, pavement and landscaped area, is an endeavour all by itself.



TOM VAN BREUKELLEN

Field Engineer for the Canadian Port of Entry
Bridging North America

COMMUNITY BENEFITS UPDATE

The project team is proud to be delivering a Community Benefits Plan which includes initiatives that will provide economic opportunities, workforce development programs and neighbourhood improvements in the communities of Sandwich/West Windsor and Delray/Southwest Detroit.

Since the launch of the plan in June 2019, Windsor-Detroit Bridge Authority and Bridging North America have been actively working toward the implementation of initiatives scheduled to occur in 2019 and 2020. Extensive planning and coordination activities are underway with the delivery partners helping to inform the execution and roll out.

Initiatives in Action

The project team hosted Vendor Summits in Windsor and Detroit for local businesses to learn more about project timing, upcoming contracting opportunities and the procurement process. Both events were well attended, attracting more than 800 collective participants.

An open call for applications for the 2020 Community Organization Investment Initiative ran from November 2019 to January 2020. This is an annual \$50,000 community investment fund on each side of the border to support events, programming and infrastructure improvements in the host communities. Approximately 60 applications were received from registered charities and non-profits located in or servicing the communities located closest to the project. The review process is now underway with funding expected to flow in July 2020. The Community Organization Investment will be offered for five years from 2020-2024.

The Southwest Detroit Business Association is launching a new business development program, Bridge to Prosperity, with the support of Community Benefits Plan funding. The program is anticipated to run for a three-year period, providing planning and development support to Southwest Detroit small businesses and start-ups during bridge construction and operations.

Community benefits activities will continue to be implemented between 2020-2025. Stay up-to-date on progress at the project website.



Windsor, Ontario Vendor Summit



Community Organization Investment Open House

IN THE COMMUNITY



Windsor Quarterly Community Meeting

Westview Freedom Academy



Bridging North America toys for United Way

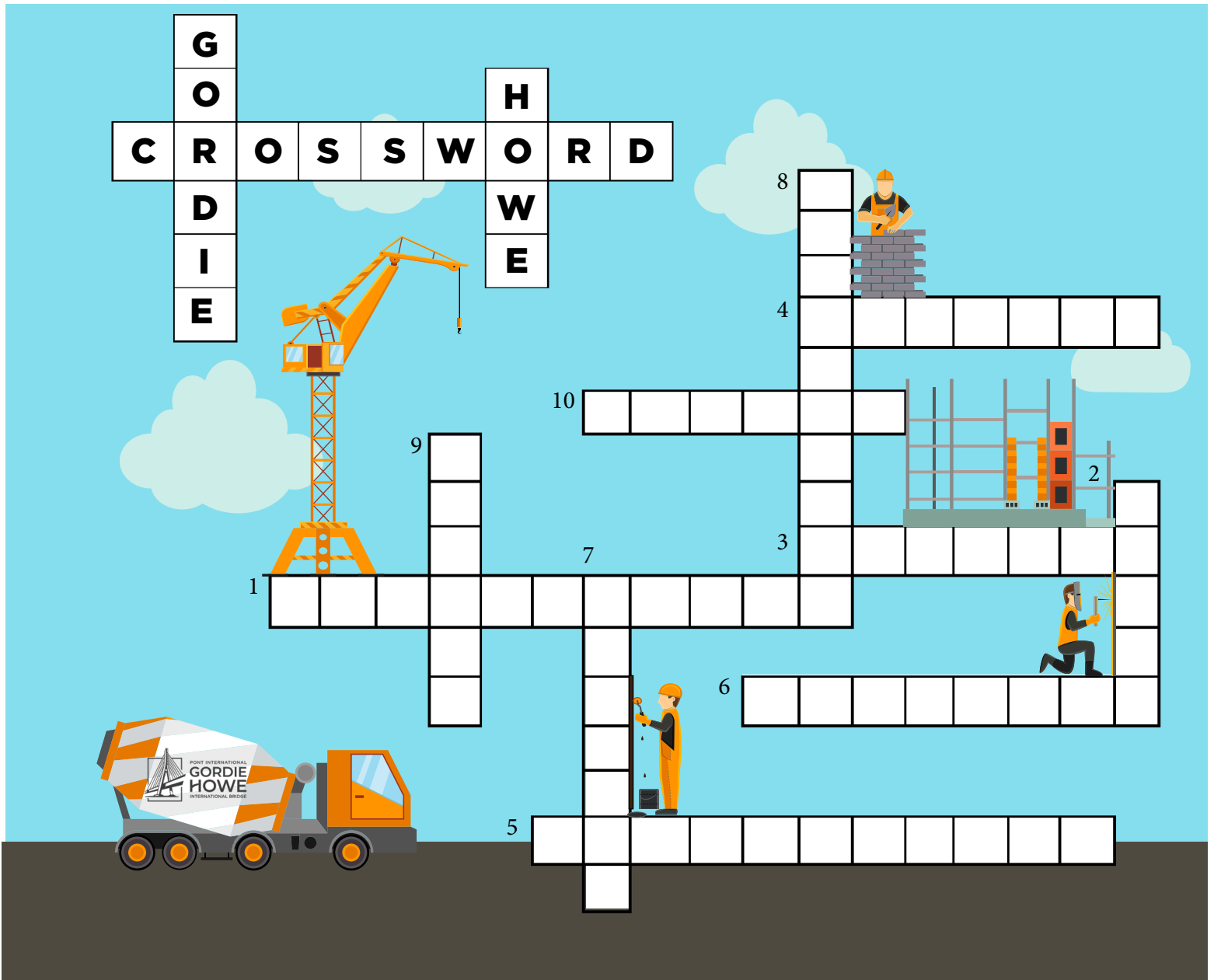
WDBA toys, clothing and gift cards for Windsor-Essex Children's Aid Foundation



C R O S S W O R D

G O D I E

H W E



1 interchange 2 crane 3 Windsor 4 Detroit 5 cablestayed 6 Fossnake 7 hardhat 8 Gordie Howe 9 towers 10 cables

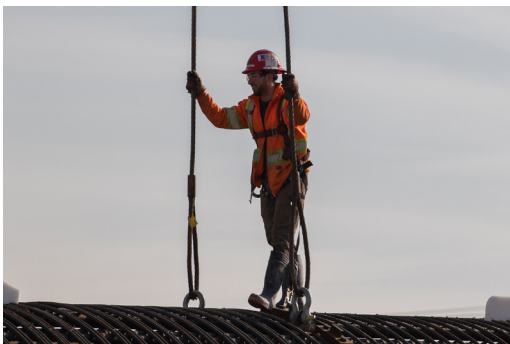
Across

1. The I-75_____ will connect to the US Port of Entry.
3. In what city is the Canadian Port of Entry located?
4. In what city is the US Port of Entry located?
5. What type of bridge is the Gordie Howe International Bridge?
6. The Eastern _____ is considered a Species at Risk.
10. The steel _____ are strong and flexible, and support the deck of the bridge.

Down

2. Helps to lift heavy objects high up.
7. You should wear this on your head in a construction site.
8. The bridge is named after this famous Canadian hockey player.
9. The bridge _____ will be almost as high as the GM Renaissance Center.

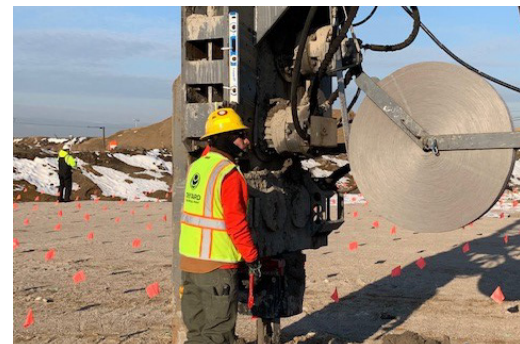
ON-SITE



Rebar cage installation



Prepping for drilled shaft installation



Wick drain installation