

Fall 2025

The Gordie Howe International Bridge is nearing completion with the team working towards targeted opening in fall 2025. With less than five per cent of all construction work remaining, we are focused on installing the final systems, testing and commissioning each of the four project components while always prioritizing the safety and the quality of our work.

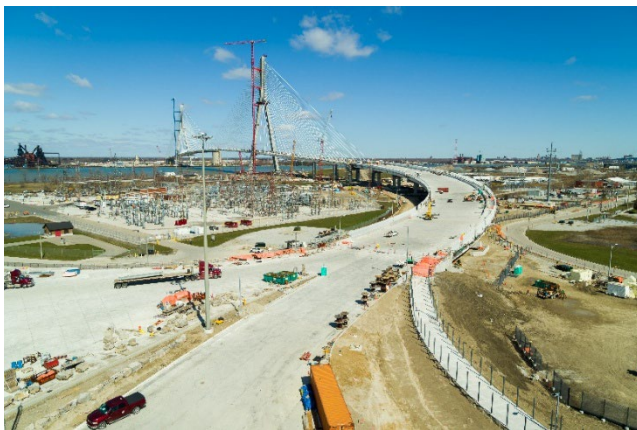
When complete, the Gordie Howe International Bridge will address the regional transportation needs of redundancy, capacity, system connectivity and improved border processing that will positively impact the flow of traffic and goods through this key gateway and help our national economies grow.

## BRIDGE SITES

The bridge is now in the final stages of construction. The bridge deck is connected and paved, and installation and stressing of the stay cables is complete. Crews are focused on the remaining steps to complete the bridge, including:

- applying stay cable protective finishings
- completion of the multi-use path
- installation of:
  - electrical
  - drainage systems
  - barriers and means restriction fencing
  - fire suppression system
  - signage
  - lighting.

Deconstruction of the bridge tower cranes has commenced. The cranes are 822 feet with each taking approximately 4-5 weeks to dismantle. The crane on the Canadian side has been fully dismantled with this process now underway in the US. The crane will self-climb down to approximately 525 feet above ground, and then a crawler crane will dismantle the remaining pieces.



Construction progress of the Gordie Howe International Bridge.

The bridge will open to traffic with six lanes of and a full width paved shoulder in each direction. It will have dynamic overhead signage to respond to real-time traffic volumes and can accommodate oversized vehicles.

The multi-use path is 3.6 metres/11.8 feet wide and will allow cyclists and pedestrians to cross the bridge toll-free. It will be separated from vehicular traffic by a concrete barrier and paved shoulder and will have means restriction fencing installed, ensuring the safety of all bridge users.

## PORTS OF ENTRY

All buildings and structures at the Canadian and US Ports of Entry (POE) are nearing completion with interior finishings taking place. Crews are moving in furniture and installing remaining cabinetry, hardware and light fixtures. Landscaping, paving and fence installation is also ongoing throughout both sites.

Work is wrapping up on the primary inspection lanes at the Canadian POE (24 lanes) and US POE (36 lanes) to facilitate effective border processing. All 16 toll booths are nearing completion at the Canadian POE, which will be equipped with technologies to accept both US and Canadian currency, prepaid accounts, transponders and a customer service call centre. Toll rates are anticipated to be announce closer to opening day.



Construction progress of the US POE (left) and Canadian POE (right).



Jefferson Avenue barrier wall construction progress.

At the US POE, construction of the Jefferson Avenue barrier wall, an eight-foot security wall along the southern boundary of the US Port of Entry (POE), is nearing completion. The barrier wall faces Jefferson Avenue and spans from Green Street to Campbell Street. The Jefferson Barrier wall features an aesthetic treatment that plays tribute to the Historic Fort Wayne's unique star fort structure.



## MICHIGAN INTERCHANGE (I-75)



Work on the 1.8 mile/3 kilometre stretch of I-75 is steadily advancing. Once complete, the Gordie Howe International Bridge will seamlessly connect I-75 in Detroit to Highway 401 in Windsor, reducing impacts to local traffic and reducing travel times.

As part of the I-75 work, four road bridges were constructed and are open to traffic located at Springwells Street, Green Street, Livernois and Clark Street. Construction of five pedestrian bridges continues at Solvey, Waterman, Beard, Junction and Lansing Streets.



I-75 construction progress

The ramps connecting I-75 to the US POE are now paved with road painting and signage installations underway. The new ramps are located between Campbell Street and Livernois Avenue and provide an overpass above Fort Street and I-75 lanes as well as on/off ramps.

**For more information about the Gordie Howe International Bridge project** visit [www.GordieHoweInternationalBridge.com](http://www.GordieHoweInternationalBridge.com) or call 1-844-322-1773. Follow us on X at [www.x.com/GordieHoweBrg](https://www.x.com/GordieHoweBrg), like us on Facebook at [www.facebook.com/GordieHoweBridge](https://www.facebook.com/GordieHoweBridge) and connect with us on LinkedIn at [www.linkedin.com/company/wdba-apwd](https://www.linkedin.com/company/wdba-apwd).