

# 9 THINGS TO KNOW ABOUT AESTHETIC LIGHTING

The Gordie Howe International Bridge aesthetic lighting testing is underway, and there's a lot more to the glow than meets the eye. Here are nine things to know about what makes this lighting system shine.

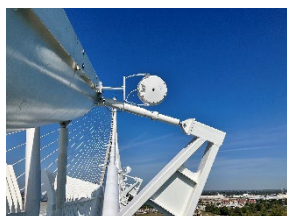
## 1) More than Meets the Eye

The more than 6,000 lighting fixtures on the bridge contain multiple LEDs adding up to millions of programmable light sources across the structure. The result? Exceptional precision, vibrant displays and a much longer lifespan than traditional bulbs. ([See Appendix A for more details](#))



## 2) A Fixture for Every Feature

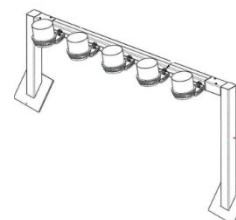
Every fixture serves its own purpose on the bridge. The system combines: 480 floodlights in six fixtures on each side of the bridge to highlight the towers ([See Appendix B for more details](#)), 216 precision lights (one per cable) that focus beams to illuminate the stay cables and 5,966 linear lights, which spread light evenly over a wide area, tracing the bridge deck and span. Together, they create the nighttime silhouette now visible across the skyline.



Stay Cable Light



Bridge Deck and  
Pier Lights



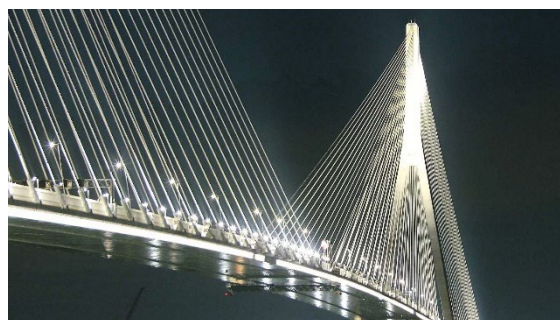
Tower Lights on  
Pergola

## 3) Measured in Years

Durability is built in. Each fixture is designed to last more than 100,000 hours with linear lights having the longest lifespan lasting up to 280,000 hours. That's over 30 years of regular night use, reducing both maintenance and replacement needs.

## 4) Bright Lights, Small Footprint

Efficiency matters. LED technology uses up to 80 per cent less energy than traditional systems, lowers maintenance costs, minimizes waste and cuts greenhouse gas emissions.

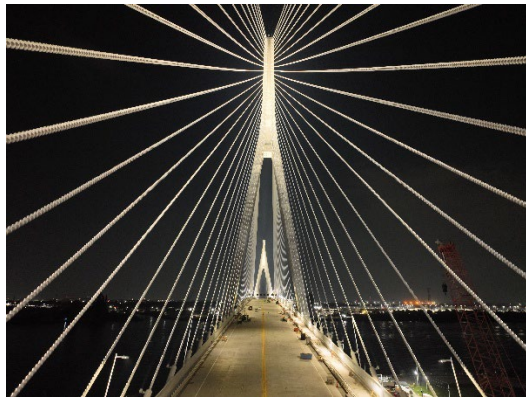


## 5) Perfect Precision

Built in optical lenses and reflectors focus each beam exactly where it is needed, enhancing the bridge's architectural lines without spilling light into the night sky. (See [Appendix A for more details](#))

## 6) Iron Shields

Custom shielding keeps the light where it belongs – on the bridge. These guards prevent glare for drivers and mariners, reduce light spillage into nearby communities and protect wildlife while maintaining the bridge's visual impact. (See [Appendix A for more details](#))



## 7) Power to the Top

Lighting the bridge's longest stay cable at 400 metres/1,310 feet requires high-wattage LEDs (205 watts each with precision optics. Deck fixtures range from 19-71 watts, while tower fixtures reach 100-205 watts. Together, they balance brightness evenly from roadway to tower top.

## 8) Smart Lights

Each fixture connects to a central control system equipped with photo sensors, environmental sensors and astronomical clocks. This technology allows operators to dim, brighten or sequence the lights in real time while adapting to conditions with ease.

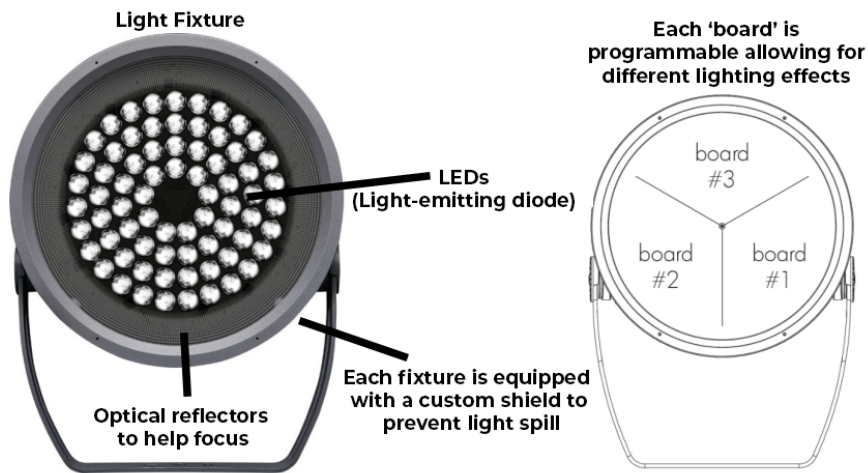
## 9) Strong Against the Elements

Before installation, every fixture was certified and tested to last a 30-year lifespan under Windsor-Detroit's unique environmental conditions. This ensures that lighting stays secure, aligned and brilliant no matter the season.

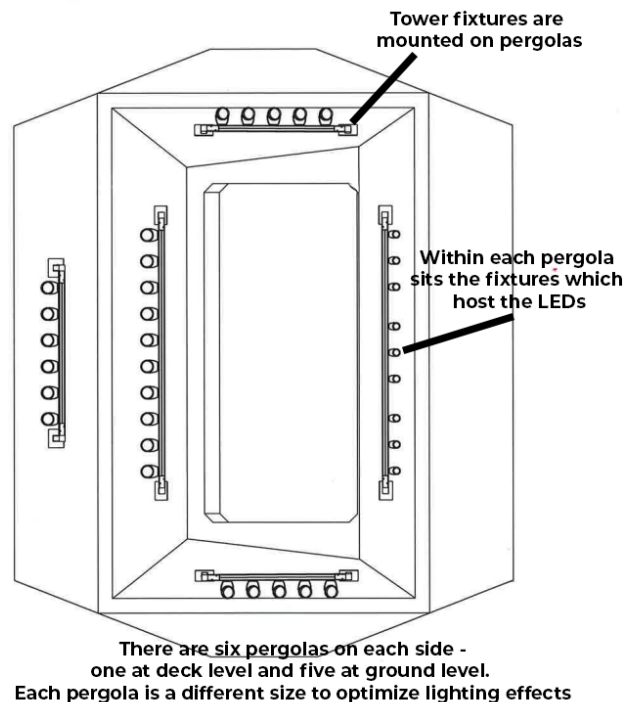


## Appendixes

### Appendix A – Example of a light fixture used on the Gordie Howe International Bridge



### Appendix B – Example of lighting fixtures/system for the tower legs on the Gordie Howe International Bridge



**For more information about the Gordie Howe International Bridge project visit**

GordieHoweInternationalBridge.com or call 1-844-322-1773. Connect with us on LinkedIn at [linkedin.com/company/wdba-apwd](https://www.linkedin.com/company/wdba-apwd), like us on Facebook at [facebook.com/GordieHoweBridge](https://www.facebook.com/GordieHoweBridge) and follow us on X [x.com/GordieHoweBrg](https://twitter.com/GordieHoweBrg).