

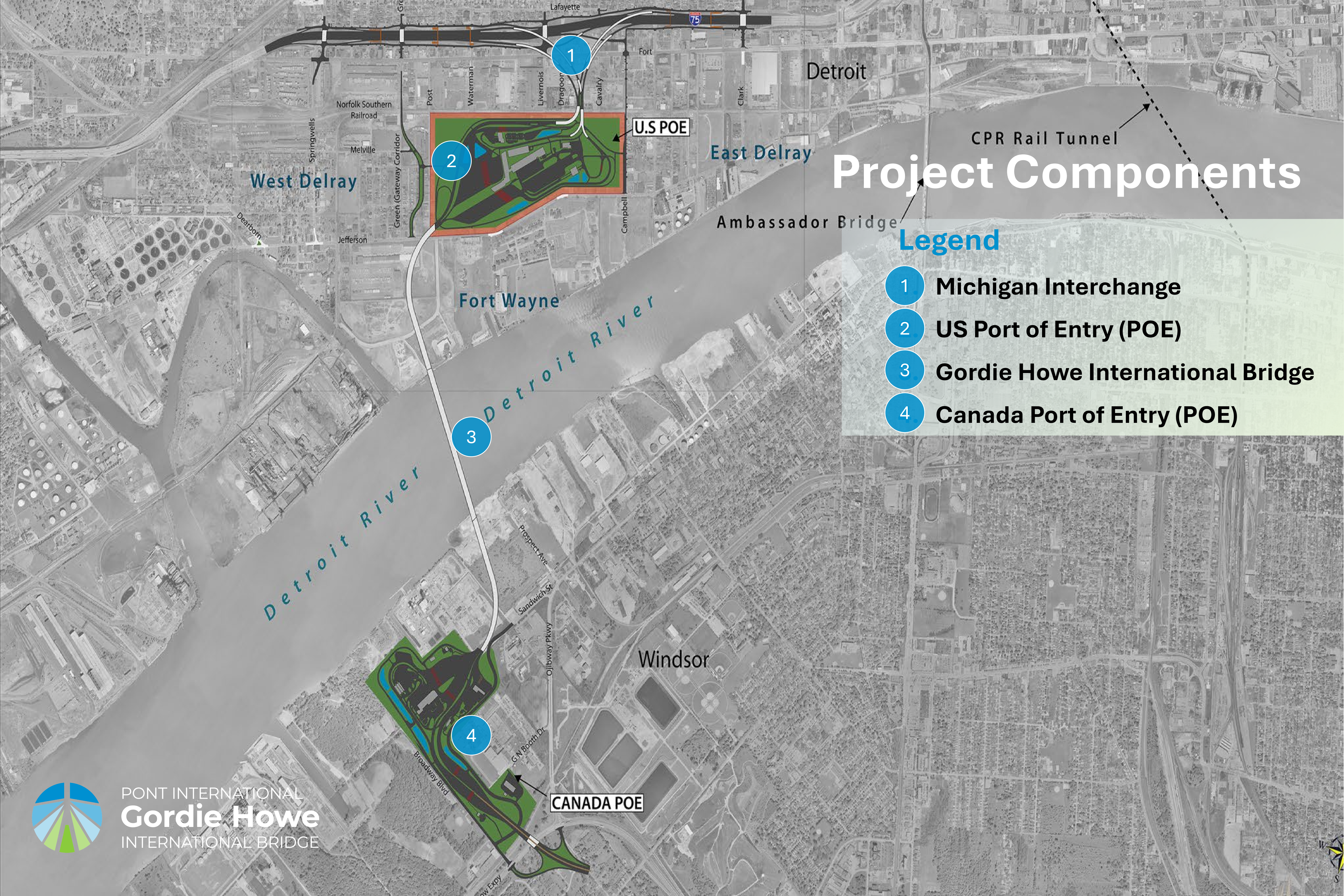
Project Components

Legend

- 1 Michigan Interchange
- 2 US Port of Entry (POE)
- 3 Gordie Howe International Bridge
- 4 Canada Port of Entry (POE)



PONT INTERNATIONAL
Gordie Howe
INTERNATIONAL BRIDGE



Project Components



PONT INTERNATIONAL
Gordie Howe
INTERNATIONAL BRIDGE

Gordie Howe International Bridge

Overhead dynamic signage to provide lane streaming capabilities depending on traffic demands.

Barrier-separated multi-use path for pedestrians and cyclists.

2.5 kilometres / 1.5 miles with a clear span of 853 metres / 0.53 miles.

- Six lanes: 3 Canadian-bound, 3 US-bound with two full-width emergency lanes.
- Accommodation for oversized vehicles and hazardous materials.

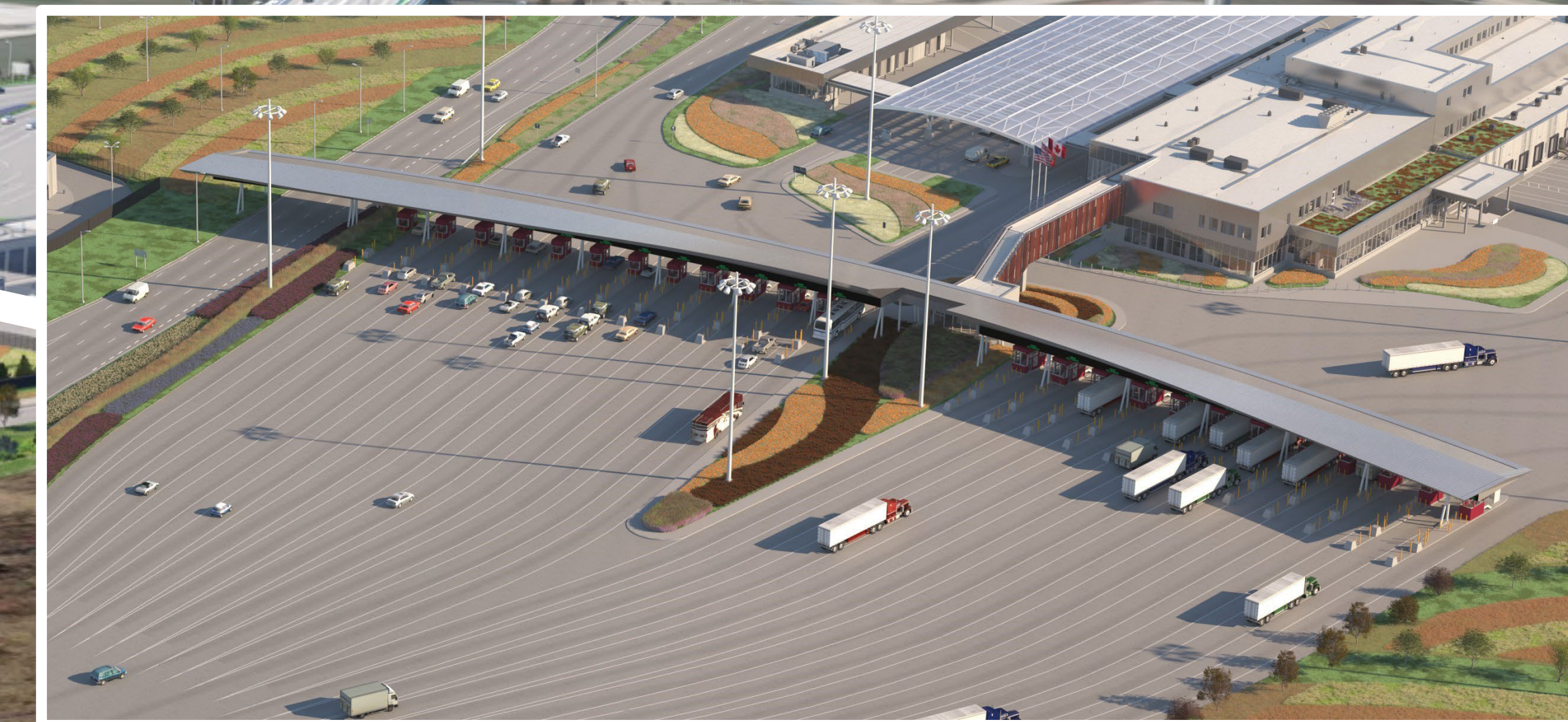


PONT INTERNATIONAL
Gordie Howe
INTERNATIONAL BRIDGE

Project Components

Canadian Port of Entry (POE)

35 secondary inspection bays for passenger traffic and dedicated bus processing.
14 commercial secondary inspection bays.



24 primary inspection lanes:
• 12 for commercial vehicles
• 12 for passenger vehicles and buses.

On-site Canadian Agencies:
• Canada Border Services Agency (CBSA)
• Canadian Food Inspection Agency (CFIA).

16 toll booths.



PONT INTERNATIONAL
Gordie Howe
INTERNATIONAL BRIDGE

Project Components

US Port of Entry (POE)

18 commercial secondary inspection bays.

41 secondary inspection bays for passenger traffic and dedicated bus processing.

36 primary inspection lanes:
• 21 for passenger vehicles and buses
• 15 for commercial vehicles.

On-site US Agencies:

- U.S. Customs and Border Protection (US CBP)
- U.S. Food and Drug Administration (FDA)
- U.S. Department of Agriculture
- U.S. Fish and Wildlife Service.



PONT INTERNATIONAL
Gordie Howe
INTERNATIONAL BRIDGE

Project Components

Michigan Interchange

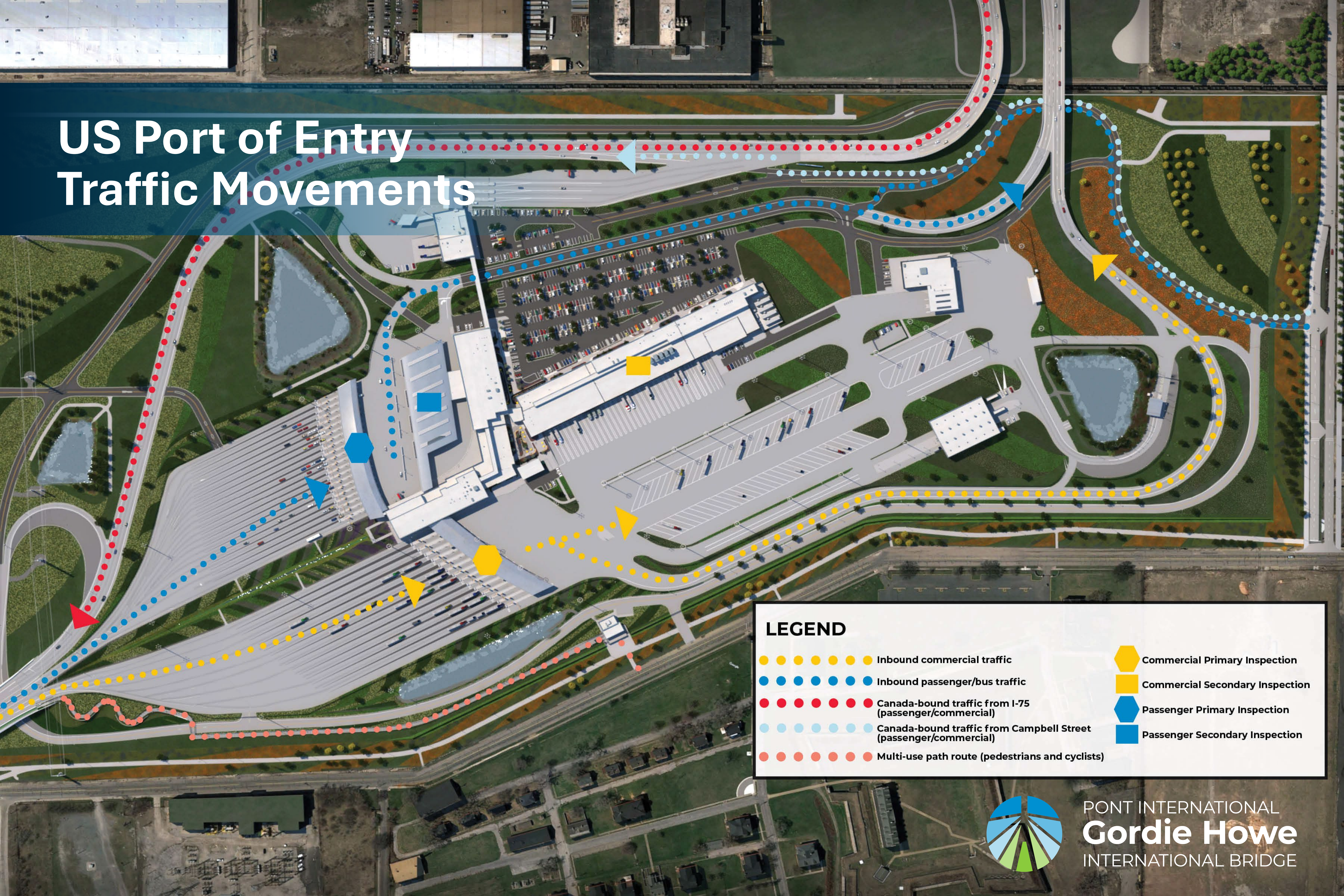
US Port of Entry

Dedicated ramps onto Interstate 75.



- 3 kilometres / 1.8 miles of I-75
- 4 new road bridges
- 5 new pedestrian bridges
- 4 new ramps connecting I-75 to the US POE
- local road improvements.

US Port of Entry Traffic Movements



LEGEND

- Yellow dotted line: Inbound commercial traffic
- Blue dotted line: Inbound passenger/bus traffic
- Red dotted line: Canada-bound traffic from I-75 (passenger/commercial)
- Light blue dotted line: Canada-bound traffic from Campbell Street (passenger/commercial)
- Orange dotted line: Multi-use path route (pedestrians and cyclists)
- Yellow hexagon: Commercial Primary Inspection
- Yellow square: Commercial Secondary Inspection
- Blue hexagon: Passenger Primary Inspection
- Blue square: Passenger Secondary Inspection



PONT INTERNATIONAL
Gordie Howe
INTERNATIONAL BRIDGE

Canadian Port of Entry Traffic Movements

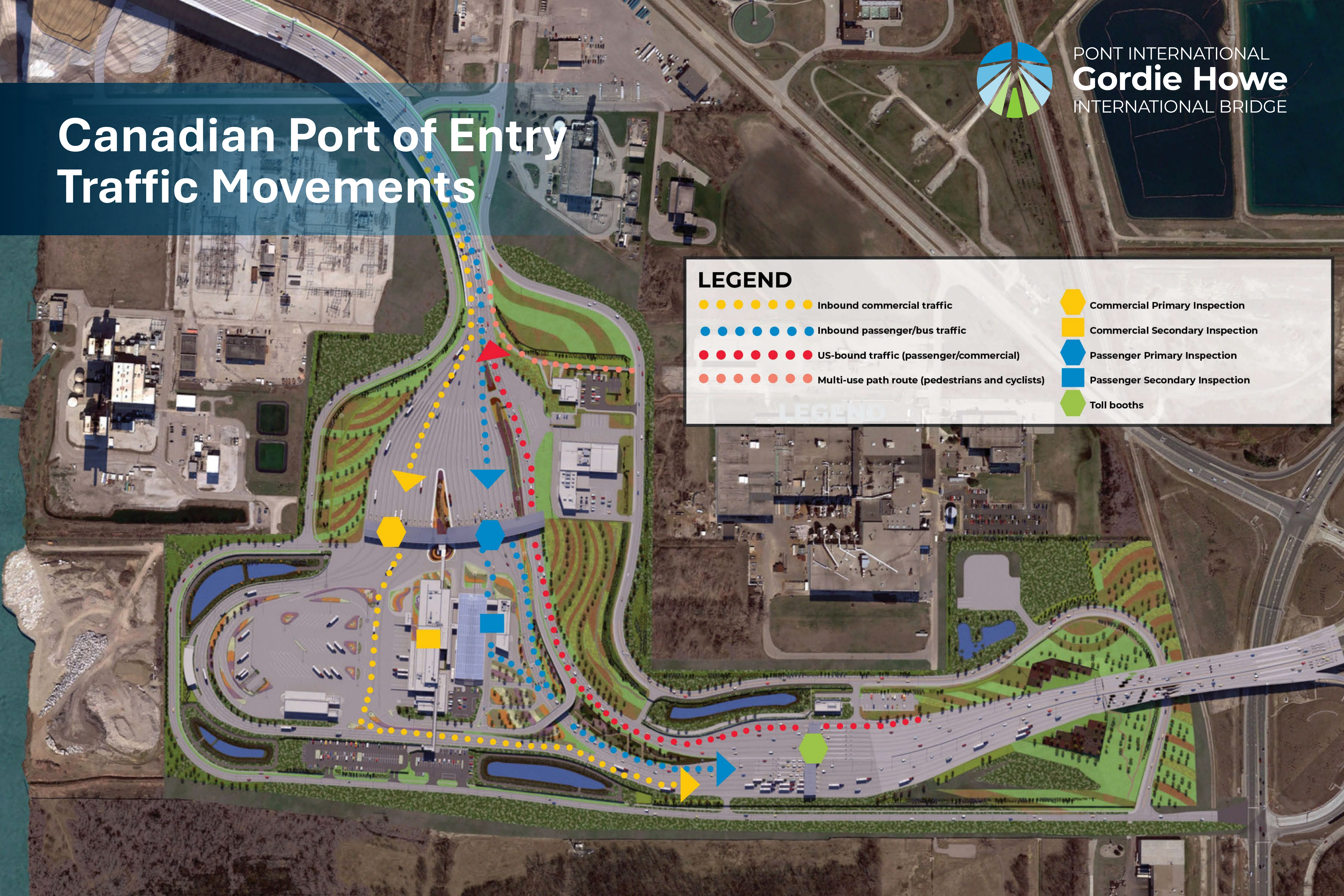


PONT INTERNATIONAL
Gordie Howe
INTERNATIONAL BRIDGE

LEGEND

- Inbound commercial traffic
- Inbound passenger/bus traffic
- US-bound traffic (passenger/commercial)
- Multi-use path route (pedestrians and cyclists)

- Commercial Primary Inspection
- Commercial Secondary Inspection
- Passenger Primary Inspection
- Passenger Secondary Inspection
- Toll booths



Construction Update

Bridge Sites

- The bridge deck is connected and paved. Line painting is underway.
- Installation and stressing of the stay cables is complete.
- Bridge tower cranes have been dismantled.
- Crews are working through the remaining steps to finalize bridge construction:
 - completion of the multi-use path
 - installation of:
 - electrical, drainage and fire suppression systems
 - barriers and means restriction fencing
 - signage
 - lighting.



Ports of Entry

- All buildings and structures on the US and Canadian Ports of Entry (POE) are mostly complete with finishing touches underway. Activities include furniture, equipment lighting and art feature installation, as well as any painting work remaining.
- All 16 toll booths are nearing completion at the Canadian POE, with testing underway.
- At the US POE, construction of the Jefferson Avenue barrier wall, an eight-foot security wall along the southern boundary, is complete. The barrier wall faces Jefferson Avenue, spanning from Green Street to Campbell Street.
- Paving is wrapping up with line painting and signage installation now underway at both POEs
- Landscaping activities are taking place throughout both POEs.



Construction Update

Michigan Interchange (I-75)

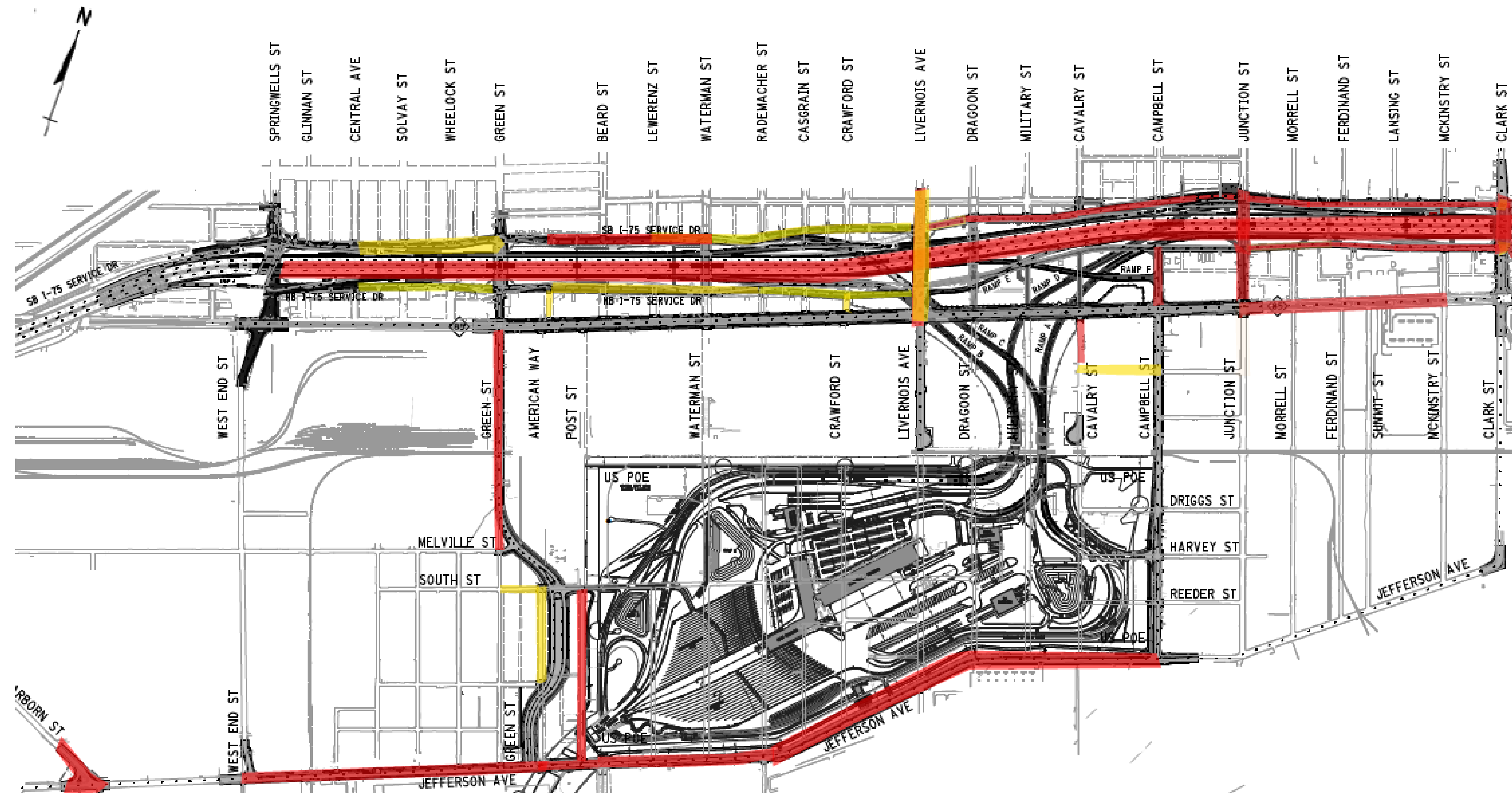
- All four road bridges are complete and open to traffic (Springwells Street, Green Street, Livernois Avenue and Clark Street).
- All five pedestrian bridges are under construction at various stages (Solvay Street, Beard Street, Waterman Street, Junction Street and Lansing Street).
- Work continues on the ramps connecting I-75 to the US POE. Pavement markings and installation of lights and signage are underway.



Detroit Traffic Patterns



- Service Drives are closed or reduced to single lanes in areas between Springwells Street and Clark Street.
- Campbell Street is open to traffic south of Fort Street.
- The primary detour route for motorists includes the use of Springwells Street, Livernois Avenue and Clark Street road bridges to cross over I-75.
- Travelers wishing to access I-75 northbound or southbound will be detoured to West Vernor Highway or Fort Street depending on directional travel needs.



Legend



Road Closed



Daily closure or flagging operations



Nightly closures

COMMUNITY BENEFITS PLAN COMPONENTS

The Community Benefits Plan is being delivered as part of the Gordie Howe International Bridge project. The plan reflects community priorities and is comprised of two components:



WORKFORCE DEVELOPMENT & PARTICIPATION STRATEGY

The Workforce Development and Participation Strategy is geared toward engaging individuals and businesses and focuses on supporting workforce, training and pre-apprenticeship/apprenticeship opportunities.

There are three sections to this strategy:

- at least \$250 million of the total value of the work during the design-build phase in Canada will be performed by, contracted to, or supplied by the workers or contractors located in the City of Windsor, Essex County or within 100 kilometres of the City of Windsor
- engaging and employing Indigenous Peoples in Canada and around the City of Windsor, Essex County and Walpole Island, Ontario and contracting their businesses
- engaging, employing and contracting Detroit residents and Detroit-based and Detroit-headquartered businesses.

The Disadvantaged Business Enterprise (DBE) goal established for this project is 2.15% of the cost of the construction and engineering work needed to complete the Michigan Interchange and the portion of the Bridge located in Michigan.



NEIGHBOURHOOD INFRASTRUCTURE STRATEGY

The Neighbourhood Infrastructure Strategy is a \$23 million community investment focused on priorities identified through consultation with communities, businesses, First Nations and other stakeholders in Windsor, Ontario and Detroit, Michigan.

The Neighbourhood Infrastructure Strategy is comprised of initiatives that are consistent with the Crossing Agreement and the key regional priorities identified:

- aesthetics, landscaping and green initiatives
- community partnerships
- economic benefits
- community safety and connections
- local history and culture
- food security and wellness.

The Community Benefits Plan includes a robust documenting, tracking and reporting structure that demonstrates accountability to the region. The Community Benefits Plan and quarterly reports on progress and results are posted on www.GordieHoweInternationalBridge.com.



PONT INTERNATIONAL
Gordie Howe
INTERNATIONAL BRIDGE

Construction Update

Jefferson Barrier Wall Complete

The Jefferson Barrier Wall features:

- An eight-foot high security wall along the southern boundary of the US POE, spanning Jefferson Avenue from Green Street to Campbell Street.
- An aesthetic treatment paying tribute to Historic Fort Wayne's unique star fort structure.
- Warm tones inspired by the Fort with subtle colour effects, complimenting adjacent landscaping.
- A star-like pattern through decorative concrete with raised corners and edges that will play with the natural light to create shadows and enhance the complex geometric wall.



The Lifeline Windsor Project

THE LIFELINE WINDSOR PROJECT FEATURES

Funded by the Community Benefits Plan, the Lifeline Windsor Project offers assistance to people in distress by providing evidence-based suicide prevention measures along the Windsor waterfront and also on the Gordie Howe International Bridge.



- Crisis intervention signage offering compassionate messages with information.



- Numbered and mapped location markers and enhanced life buoy systems placed at strategic locations to provide first responders with exact coordinates along the waterfront.

Bridge features already installed include:



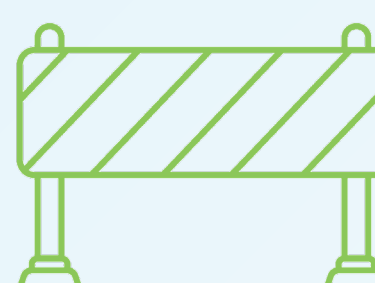
- 12-foot high means restriction fencing installed on both sides of the bridge that provides an unclimbable physical barrier to the river below.



- Emergency call stations where people can request assistance.



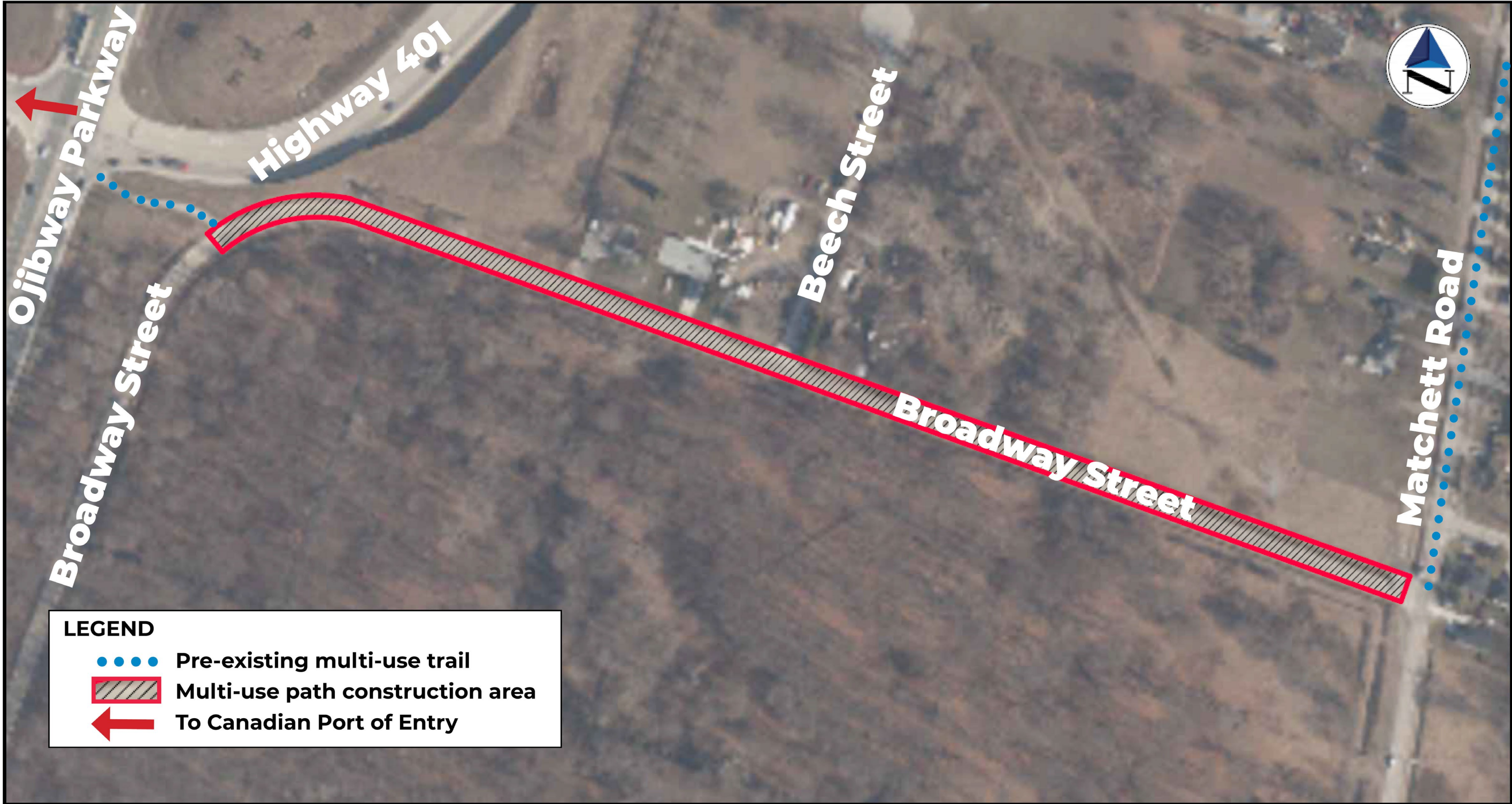
- Security cameras and lighting.



- Barriers that separate the bridge's multi-use path and the vehicle lanes.



Broadway Street Multi-Use Path



BROADWAY STREET MULTI-USE PATH DESIGN AND CONSTRUCTION

Construction on the Broadway Street multi-use path and Malden Park trailhead began in June and was completed in September.

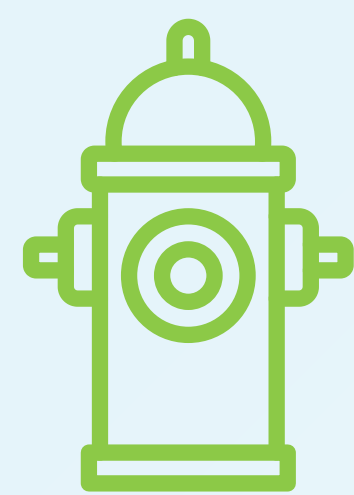
The Broadway Street multi-use path has been constructed to meet *Accessibility for Ontarians with Disabilities Act (AODA)* requirements and includes:



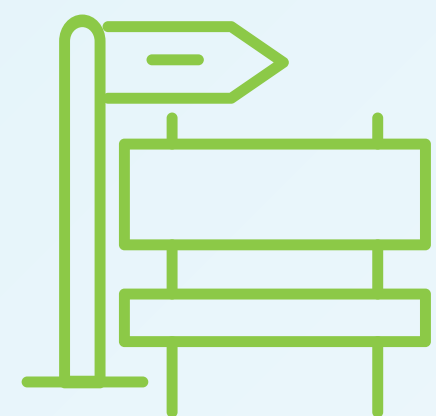
A three-metre-wide asphalt multi-use path, separated from vehicular traffic by a buffer including road markings and rumble strips, where space permits.



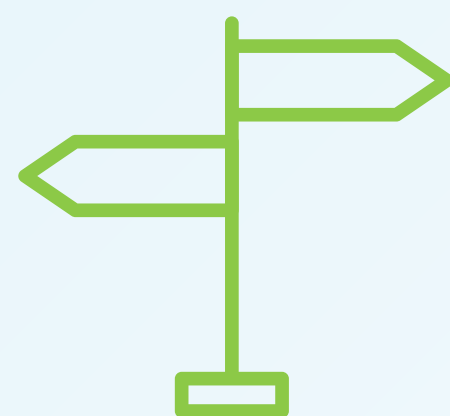
Infill of the existing ditch on the north side of Broadway Street and a new swale adjacent to the new multi-use path to facilitate stormwater drainage, including installation of catch basins and culverts.



Relocation of hydrants and other existing infrastructure, as needed.



Creation of a trailhead at Malden Park, adjacent to the Matchett Road parking lot, including benches, wayfinding signage and garbage cans.



Installation of wayfinding signage.

CUSTOMER ACCOUNTS



**SUBSCRIBE
FOR UPDATES**

An integral part of the Gordie Howe International Bridge tolling system is the use of customer accounts linked with transponders to move travellers quickly through the toll facilities.

Customers will be able to register for an account before opening day.



**DISCOUNTED
RATES**



**FREE
TAGS**



**ON THE
ROAD FASTER**



**CONSOLIDATED
BILLING**



**HASSLE-FREE
TRAVEL**



**CUSTOMER
CARE**

RECEIVE DISCOUNTED TOLL RATES WITH OUR FLEXIBLE ACCOUNT OPTIONS



BUSINESS ACCOUNTS

PREPAID

Prepaid business accounts will be available for businesses of any size and vehicle type, offering unlimited transponders linked through one account.

POSTPAID

Monthly invoiced accounts will be available for large business fleets conducting more than 1000 trips per month. An application and credit report will be required.

HOW IT WORKS:

When you register for an account you'll receive a transponder that allows you to simply drive to any open toll lane at the Gordie Howe International Bridge, and the gate will open in seconds upon your arrival. Tolls will be automatically deducted from your prepaid account or invoiced through monthly billing (postpaid).



PERSONAL ACCOUNTS

PREPAID

Prepaid account will be available for individuals, families and commuters with passenger-type vehicles. This account type will offer up to four transponders.



TOLL RATES:

Rates for the Gordie Howe International Bridge will be announced closer to opening day with a flat rate for personal vehicles and axle-based rates for commercial vehicles.



PONT INTERNATIONAL
Gordie Howe
INTERNATIONAL BRIDGE

Stay connected

 gordiehoweinternationalbridge.com

 info@wdbbridge.com

 1-844-322-1773

 Gordie Howe Bridge

 @gordiehowebrg

 @gordiehowebridge

 @gordiehowebrg

 WDBA-APWD

Visit our offices

WDBA Office
100 Ouellette Ave., Suite 400
Windsor, ON

Southwest Detroit Community Office
7744 W Vernor Hwy.
Detroit, MI, 48209

Sandwich Community Office
3201 Sandwich St.
Windsor, ON
N9C 1A8